

## SUPIRSPAN PANELS

### PURPOSE

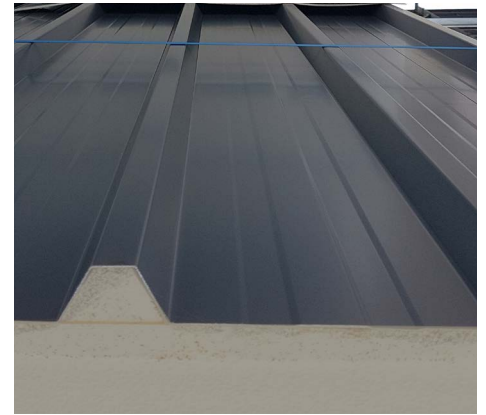
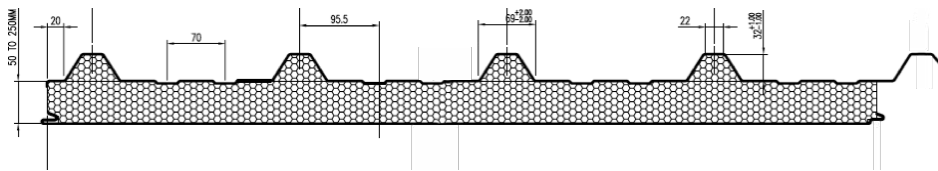
suPIRspan panels, supplied by Metalcraft Insulated Panels, are intended for use as an insulated, fire-resistant, fully finished roof panel.

### EXPLANATION




suPIRspan is a lightweight, thermally efficient roof panel, manufactured in New Zealand. The panels have a polyisocyanurate (PIR) core, sandwiched between 0.59 mm layers of galvanised steel with a factory applied Colorsteel™ finish. The Colorsteel™ finish will depend on the specific exposure zone and use.

The panels are available in a variety of colours and a single profile. With a width of 1000 mm, they can be supplied in project specific lengths.

The panels can be made with different thicknesses of PIR core, depending on thermal and span requirements. The panels are supplied with a smooth internal face with a tongue and groove joint. The external face is a symmetrical, trapezoidal profile with a single lap corrugation.



For further assistance please contact:

-  +64 9 277 8844
-  sales@metpanels.co.nz
-  metalcraftgroup.co.nz



### SCOPE AND LIMITATIONS OF USE

Scope	Limitations
<b>Location</b> In all wind zones, up to and including extra high wind zone as defined in NZS 3604:2011 or a calculated wind design pressure (ULS) of 4 kPa. With a snow loading of up to 1kPa. In all exposure zones as defined in NZS 3604:2011.	<ul style="list-style-type: none"> <li>➤ All fixings to comply NZ Steel requirements (NZ Steel, 2018).</li> <li>➤ Where the system is to be used in a micro-climate (as defined in clause 4.2.2, NZS 3604:2011), Metalcraft Insulated Panel Systems is to be consulted.</li> <li>➤ In exposure zone D, Colorsteel™ Maxx® must be specified. In exposure zone C, Colorsteel™ Maxx® or Endura® may be specified. In exposure zone B, any Colorsteel® product may be specified (NZ Steel, 2018).</li> </ul>
<b>Building</b> In all building uses. In new buildings where the relevant part of the building complies with the NZ Building Code, or in existing buildings where the designer and installer have assured themselves that the relevant part of the building is adequate for the intended building work. With steel or timber structural framing and on a concrete slab or sub-floor structure. In buildings with a minimum roof pitch of 3°.	<ul style="list-style-type: none"> <li>➤ In buildings that require fire-resistance rating (FRR) for passive fire protection, the passive fire protection systems must be specifically designed.</li> <li>➤ Where compliance with G3.3.2 (a and b) is required, Colorsteel® CP-Antibacterial must be specified as the internal lining of the panel.</li> <li>➤ Span of the panels is to be in accordance with suPIRspan tables V1.0, dated November 2019.</li> </ul>

### USEFUL INFORMATION

For information on the design, installation and maintenance of suPIRspan, and for our warranty, refer to [www.metalcraft.co.nz](http://www.metalcraft.co.nz).

### OTHER CERTIFICATIONS AND APPROVALS HELD BY THE STEEL MANUFACTURER

As the manufacturer of the steel that is used in the manufacture of suPIRspan, NZ Steel provides assurance that the steel:

- has been manufactured in accordance with AS 1397-2001
- is coated in accordance with AS/NZS 2728:2013, or galvanized in accordance with AS/NZS 2312.2:2014.

NZ Steel has established an Environmental Management System certified to ISO 14001.

## CONDITIONS

The specification and installation of the suPIRspan is to be in accordance with the ThermoSpan EPS specification and installation. This documentation is available from <https://www.metalcraftgroup.co.nz/products/metal-insulated-panels/products/thermospan-eps/>.

## PERFORMANCE CLAIMS

If designed, installed and maintained in accordance with all Metalcraft Insulation Panels requirements, suPIRspan will comply with or contribute to compliance with the following performance claims:

N.Z. Building Code clauses	BASIS OF COMPLIANCE	
	Compliance statement <sup>1</sup>	Demonstrated by
<b>B1 Structure</b> B1.3.1, B1.3.2, B1.3.3 (a), (b), (c), (f), (e), (g), (i), (j), (l), (m) & (q) B1.3.4 (b), (c), (d) & (e)	ALTERNATIVE SOLUTION	<ul style="list-style-type: none"> <li>➤ Global Mark CodeMark certification evaluation (Global Mark, 28/06/2017).</li> <li>➤ Span in accordance with suPIRspan tables, V1.0, dated November 2019.</li> </ul>
<b>B2 Durability</b> B2.3.1(a)	ALTERNATIVE SOLUTION	<ul style="list-style-type: none"> <li>➤ Global Mark CodeMark certification evaluation (Global Mark, 28/06/2017)</li> </ul>
<b>C3 Fire affecting areas beyond the fire source</b> C3.4 (a)	ACCEPTABLE SOLUTION C/AS2 1st Edition June 2019	<ul style="list-style-type: none"> <li>➤ Steel is non-combustible, refer para 5.8 of C/AS2.</li> <li>➤ The panel achieves a material group 1S when tested to ISO 9705:1993. The test was carried out by BRANZ and BRANZ is accredited to carry out this test (BRANZ, 17 April 2019).</li> <li>➤ Metalcraft Insulated Panels confirmed the PIR core in suPIRpanel is the same as that tested in BRANZ Type Test FI11055-001.</li> </ul>
<b>E2 External moisture</b> E2.3.1, E2.3.2, E2.3.3, E2.3.4, E2.3.7 (b) & (c)	ALTERNATIVE SOLUTION	<ul style="list-style-type: none"> <li>➤ Global Mark CodeMark certification evaluation (Global Mark, 28/06/2017).</li> </ul>
<b>E3 Internal moisture</b> E3.3.1, E3.3.4, E3.3.5, E3.3.6	ALTERNATIVE SOLUTION	<ul style="list-style-type: none"> <li>➤ Global Mark CodeMark certification evaluation (Global Mark, 28/06/2017).</li> </ul>
<b>F2 Hazardous building materials</b> F2.3.1	ALTERNATIVE SOLUTION	<ul style="list-style-type: none"> <li>➤ Global Mark CodeMark certification evaluation (Global Mark, 28/06/2017).</li> </ul>
<b>G3 Food preparation and prevention of contamination</b> G3.3.2 (a) & (b)	ALTERNATIVE SOLUTION	<ul style="list-style-type: none"> <li>➤ Global Mark CodeMark certification evaluation (Global Mark, 28/06/2017).</li> </ul>

1. The Compliance Statement is the pass™ holder's statement that they have met their obligations under s14G(2) of the Building Act 2004.

Other performance statement	BASIS OF STATEMENT	
	Performance statement	Demonstrated by
suPIRspan will not contaminate potable water.	AS/NZS 4020:2005	<ul style="list-style-type: none"> <li>➤ Claimed by NZ Steel (NZ Steel, 2018).</li> <li>➤ BRANZ statement that metal roof is suitable (BRANZ, 2018).</li> </ul>

## SOURCES OF INFORMATION

- BRANZ. [17 April 2019]. *BRANZ Type Test FI11055-001*. Fire Type Test, Wellington.
- BRANZ. [2018, November]. *Water, harvesting rain water*. Retrieved November 2019, from Level: <http://www.level.org.nz/water/water-supply/mains-or-rainwater/harvesting-rainwater/>
- Global Mark. [28/06/2017]. *Metalcraft Insulated Panel CodeMark Certificate of Conformity, GM-CM30078*. Retrieved 11/04/2019, from MBIE Product Certificate Register: [Metalcraft-insulated-panel-system.pdf](http://metalcraft-insulated-panel-system.pdf)
- NZ Steel. [2018, October]. *Colorsteel Assets*. Retrieved November 2019, from product description: [NZS0005\\_305\\_Product\\_Technical\\_Statement\\_Endura\\_1pp.pdf](#)
- NZ Steel. [2018, October]. *Environmental Categories, Warranty & Product Maintenance Recommendations*. Retrieved 2019, from Colorsteel: [NZS0005\\_201\\_Environmental\\_Categories\\_Brochure\\_6pp.pdf](#)
- NZ Steel. [2018, October]. *Incompatible Materials*. Retrieved 2019, from [NZS0005\\_108\\_Incompatible\\_Materials\\_Bulletin.pdf](#)

**VERSION:** ..... **DATE:** .....

*Note: Uncontrolled in printed format.*

**NAME:** ..... Peter Zeeman

**POSITION:** ..... Operations Manager

Signed on behalf of Metalcraft Insulated Panels:

By signing this pass™ the signatory confirms that, in respect of the subject of this pass™, the company has met their s14G obligations under the Building Act 2004.

