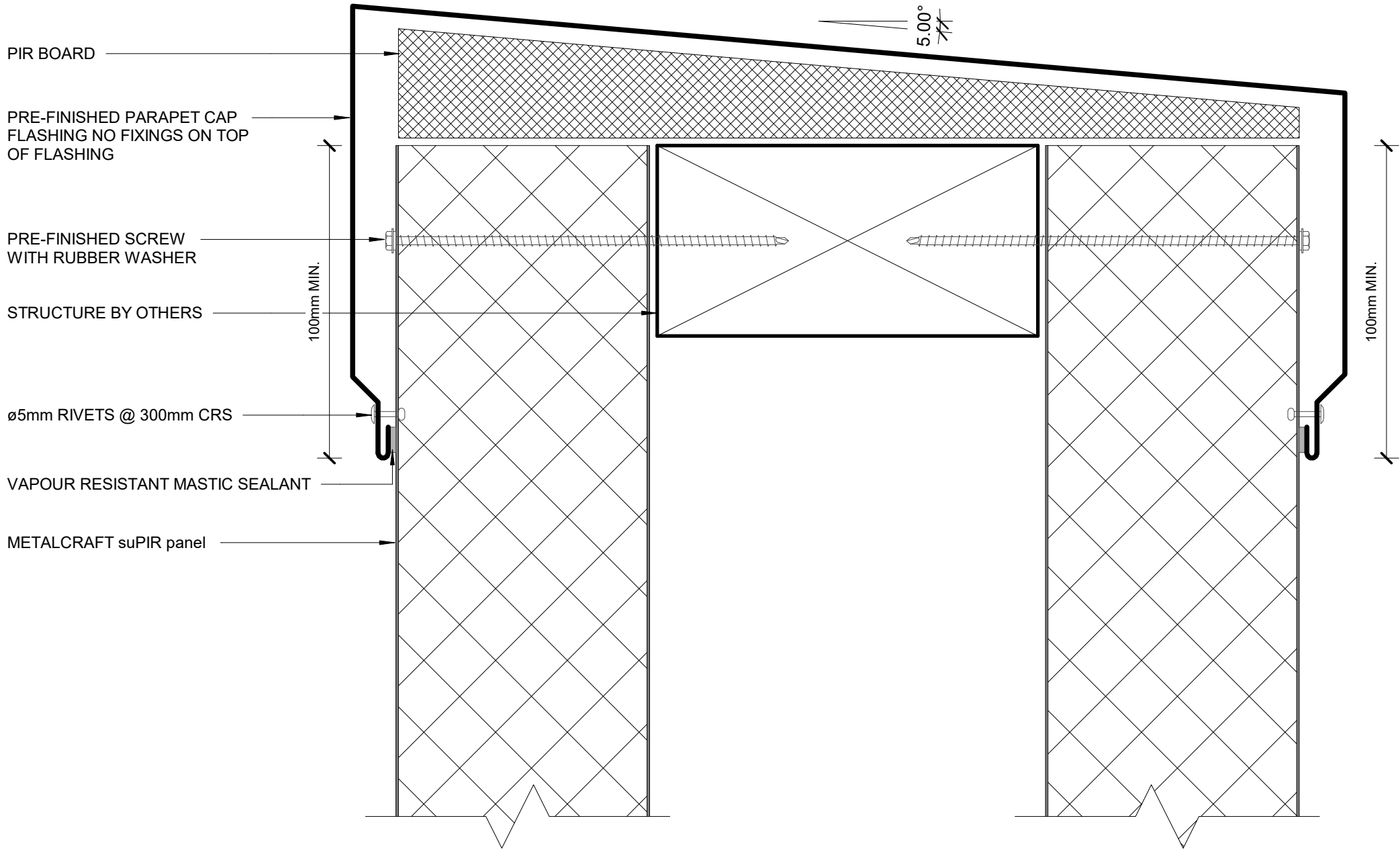
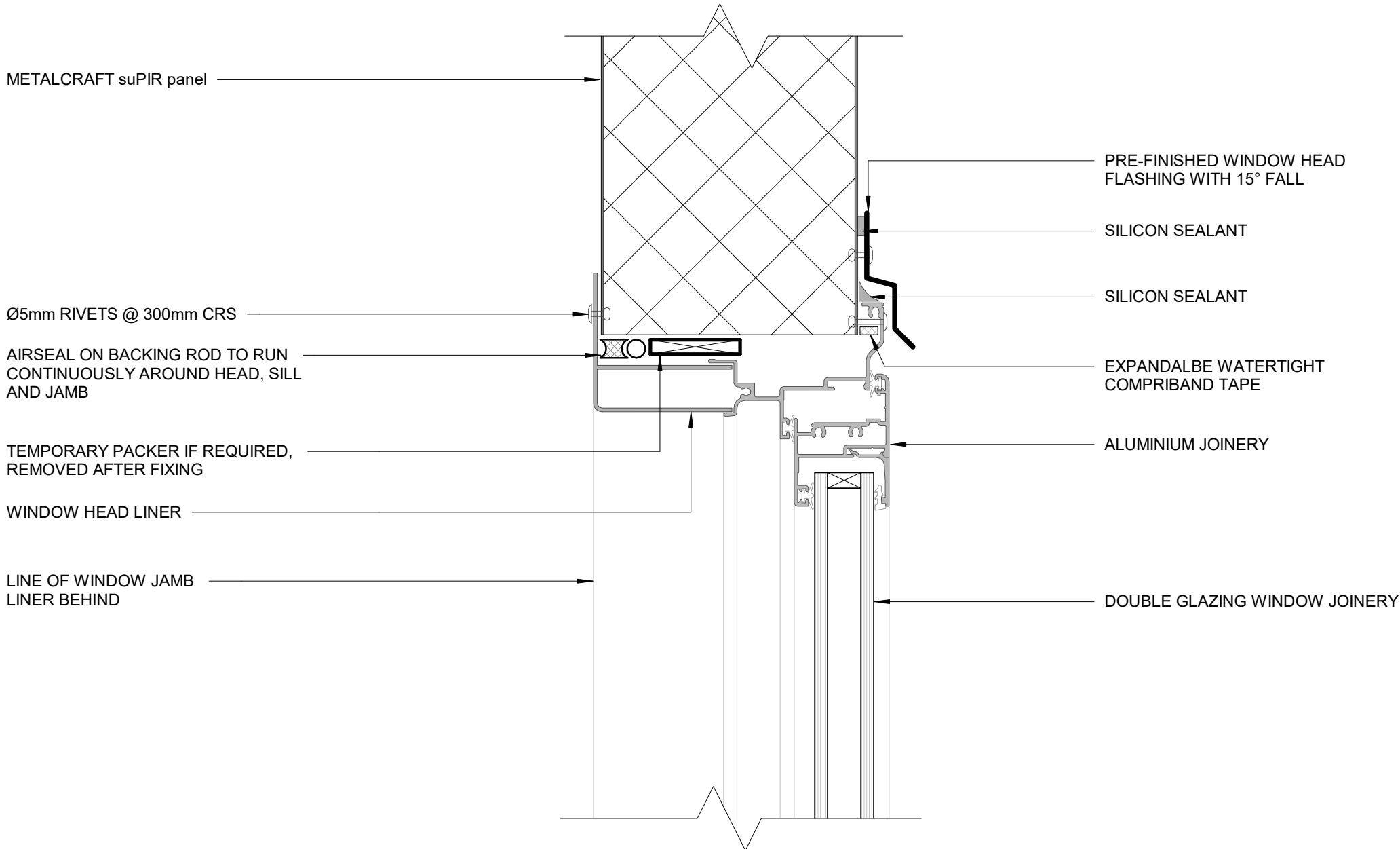


suPIR panel

EXTERNAL WALL DETAILS

<u>DETAIL LIST</u>	<u>Revision</u>	<u>Date</u>
00 / 21		
01 / 21		
02 / 21		
03 / 21		
04 / 21		
05 / 21		
06 / 21		
07 / 21		
08 / 21		
09 / 21		
10 / 21		
11 / 21		
12 / 21		
13 / 21		
14 / 21		
15 / 21		
16 / 21		
17 / 21		
18 / 21		
19 / 21		
20 / 21		
21 / 21		
COVER SHEET		
PARAPET	1.0	12.2019
WINDOW HEAD	1.0	12.2019
WINDOW SILL AND JAMB	1.0	12.2019
VERTICAL JOINT TYPE C	1.0	12.2019
PIPE PENETRATION w DEKTITE FLASHING	1.0	12.2019
PIPE PENETRATION w PVC FLANGE	1.0	12.2019
MIDFLOOR JOINT	1.0	12.2019
SECRET FIXING JOINT 01	1.0	12.2019
SECRET FIXING JOINT 02	1.0	12.2019
METERBOX JAMB HEAD AND SILL DETAIL	1.0	12.2019
INTERNAL/EXTERNAL CORNER DETAIL	1.0	12.2019
ALTERNATIVE INTERNAL CORNER	1.0	12.2019
ALTERNATE EXTERNAL CORNER	1.0	12.2019
ABUTMENT 01	1.0	12.2019
ABUTMENT 02	1.0	12.2019
BOTTOM OF CLADDING 01	1.0	12.2019
BOTTOM OF CLADDING 02	1.0	12.2019
BOTTOM OF CLADDING 03	1.0	12.2019
BOTTOM OF CLADDING 04	1.0	12.2019
BOTTOM OF CLADDING 05	1.0	12.2019
PANEL PROFILE AND SIZE	1.0	12.2019





METALCRAFT suPIR panel

Ø5mm RIVETS @ 300mm CRS

AIRSEAL ON BACKING ROD TO RUN CONTINUOUSLY AROUND HEAD, SILL AND JAMB

TEMPORARY PACKER IF REQUIRED, REMOVED AFTER FIXING

WINDOW HEAD LINER

LINE OF WINDOW JAMB LINER BEHIND

PRE-FINISHED WINDOW HEAD FLASHING WITH 15° FALL

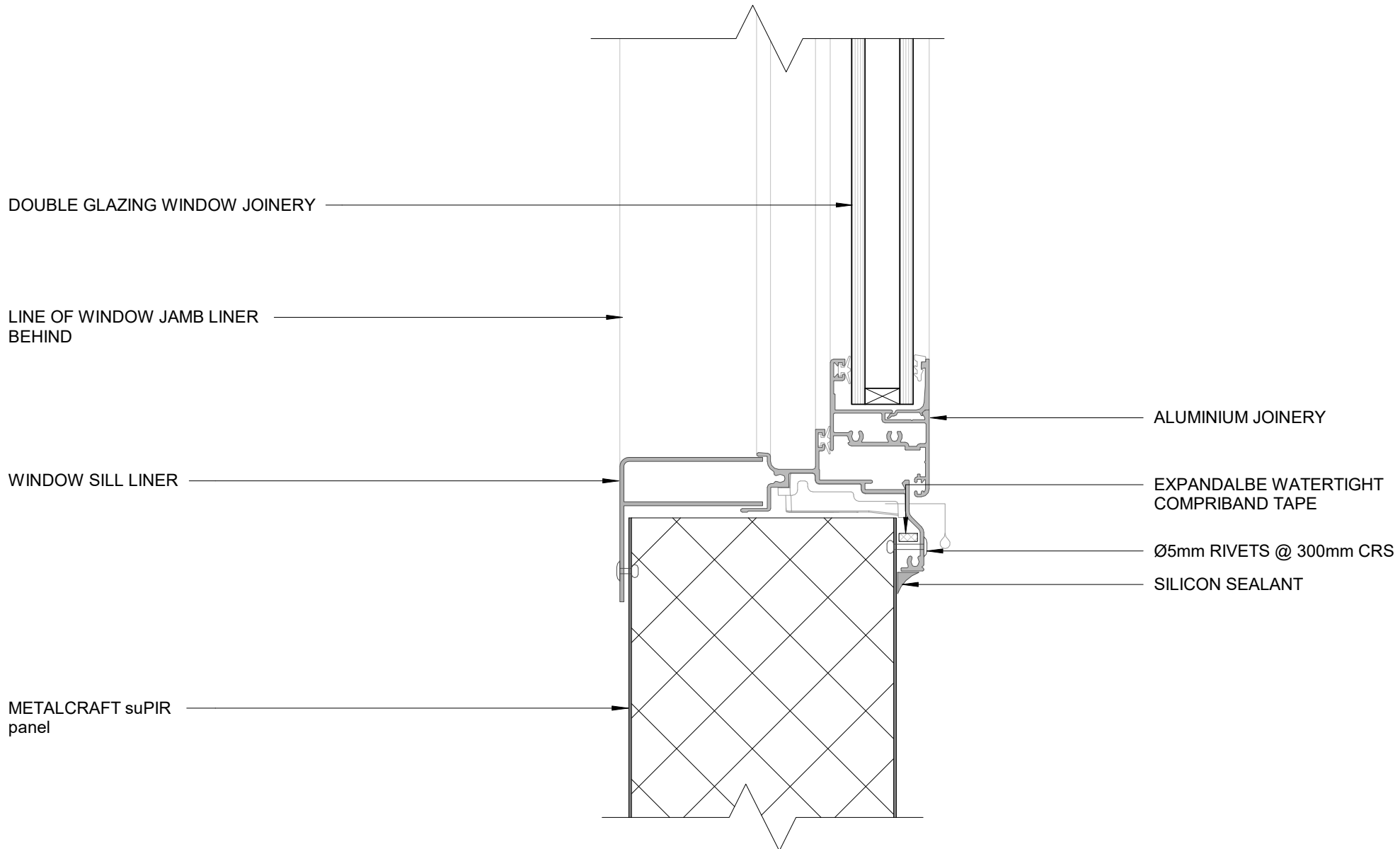
SILICON SEALANT

SILICON SEALANT

EXPANDALBE WATERTIGHT COMPRIBAND TAPE

ALUMINIUM JOINERY

DOUBLE GLAZING WINDOW JOINERY



DOUBLE GLAZING WINDOW JOINERY

LINE OF WINDOW JAMB LINER
BEHIND

WINDOW SILL LINER

METALCRAFT suPIR
panel

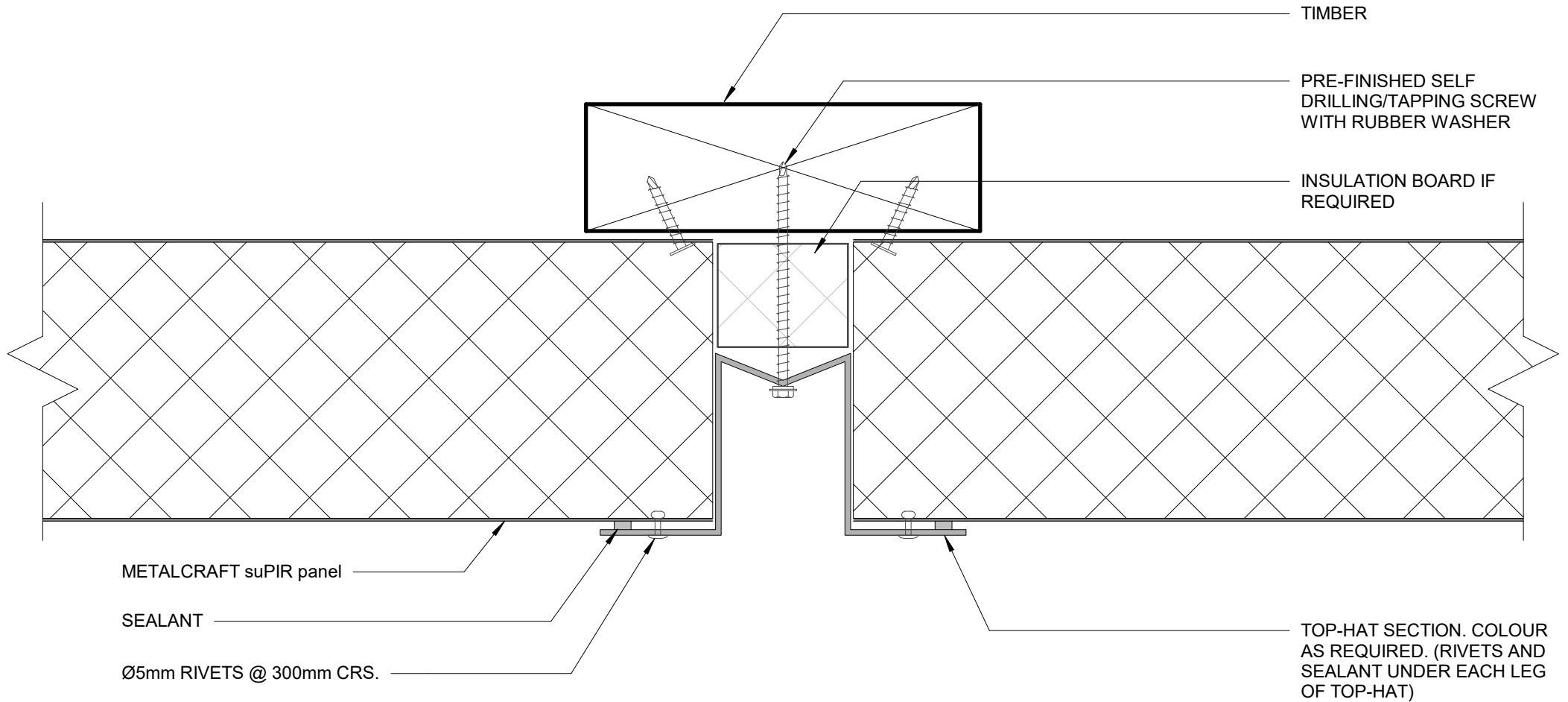
ALUMINIUM JOINERY

EXPANDALBE WATERTIGHT
COMPRIBAND TAPE

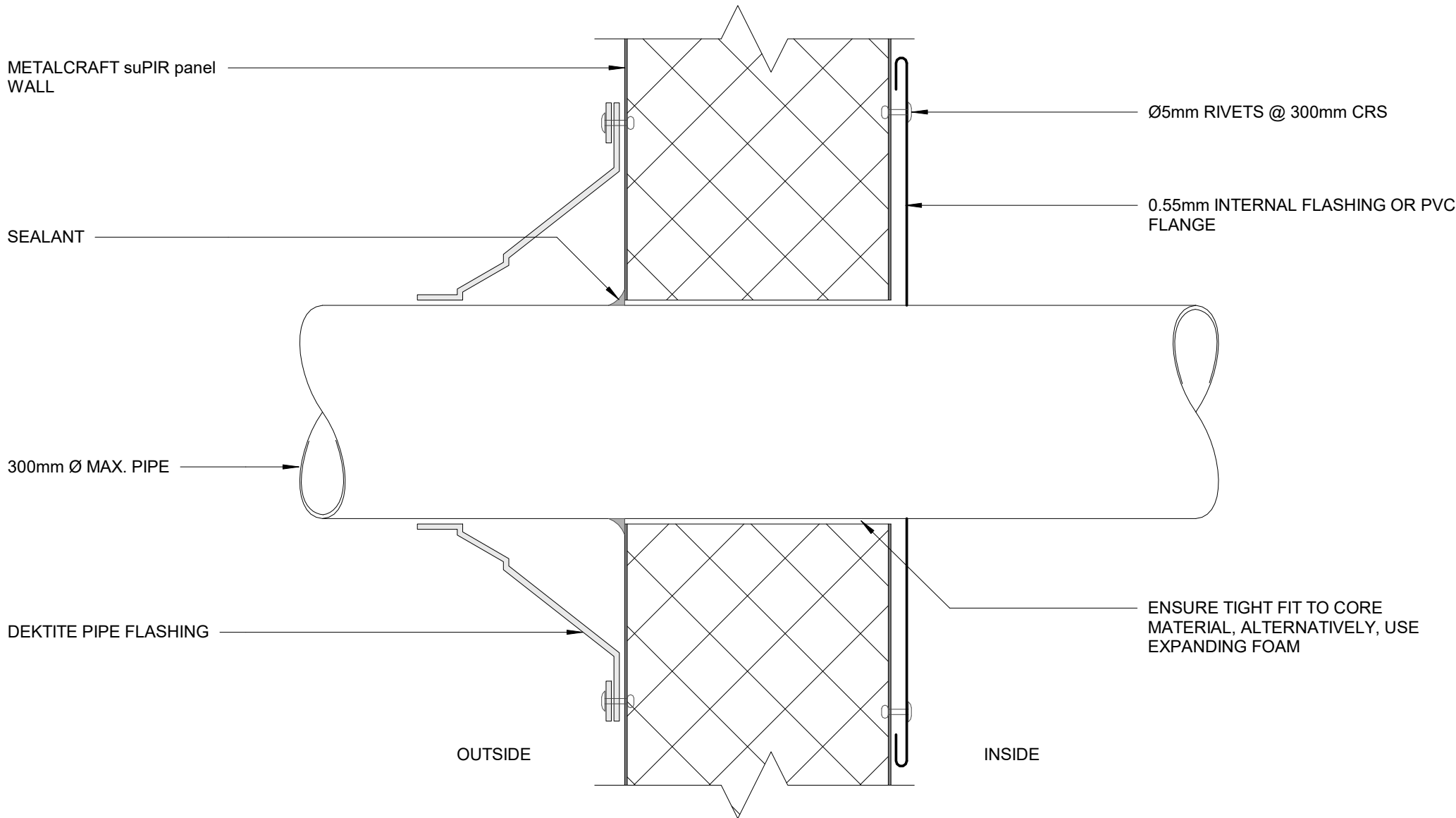
Ø5mm RIVETS @ 300mm CRS

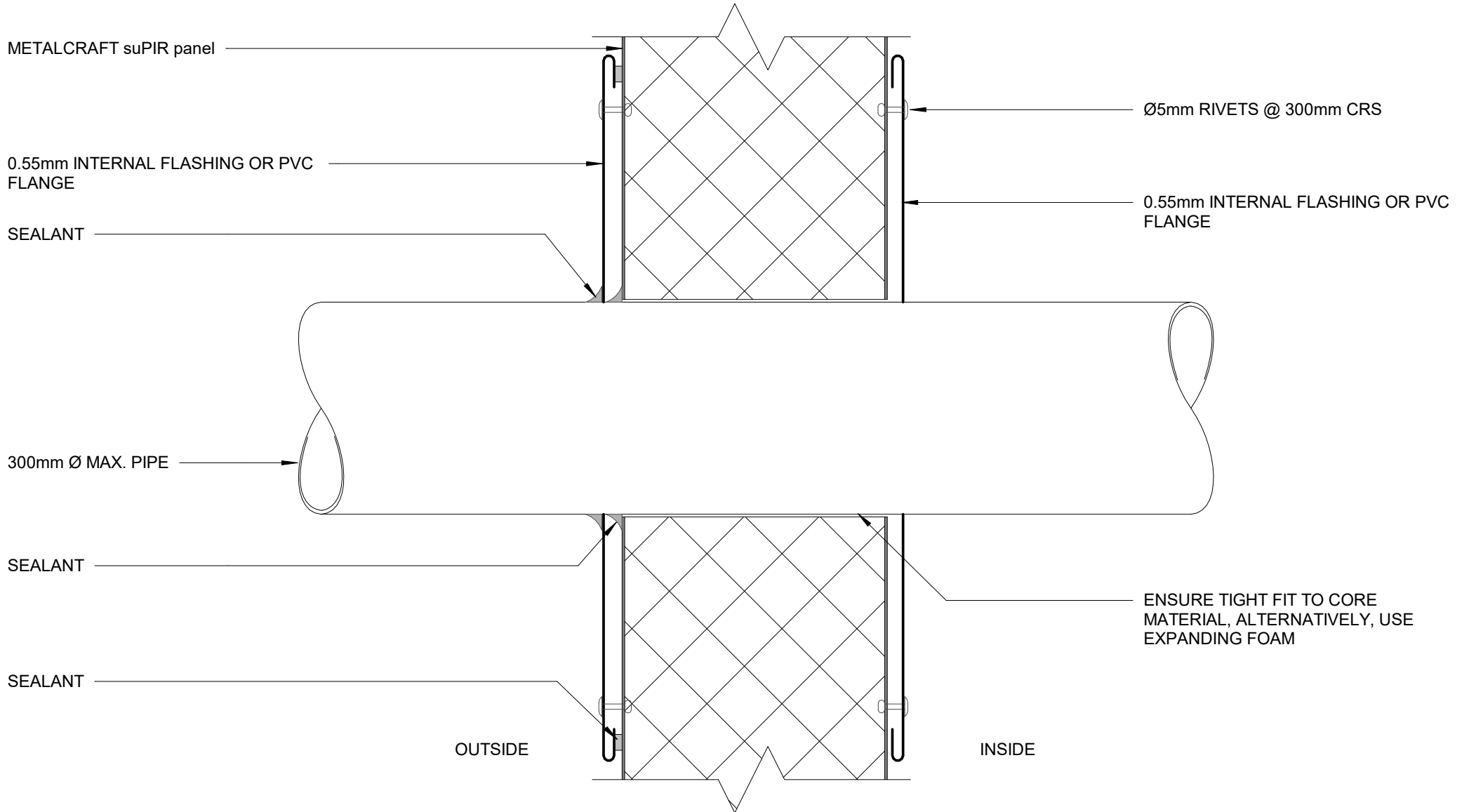
SILICON SEALANT

WINDOW SILL AND JAMB
EXTERNAL WALL DETAILS



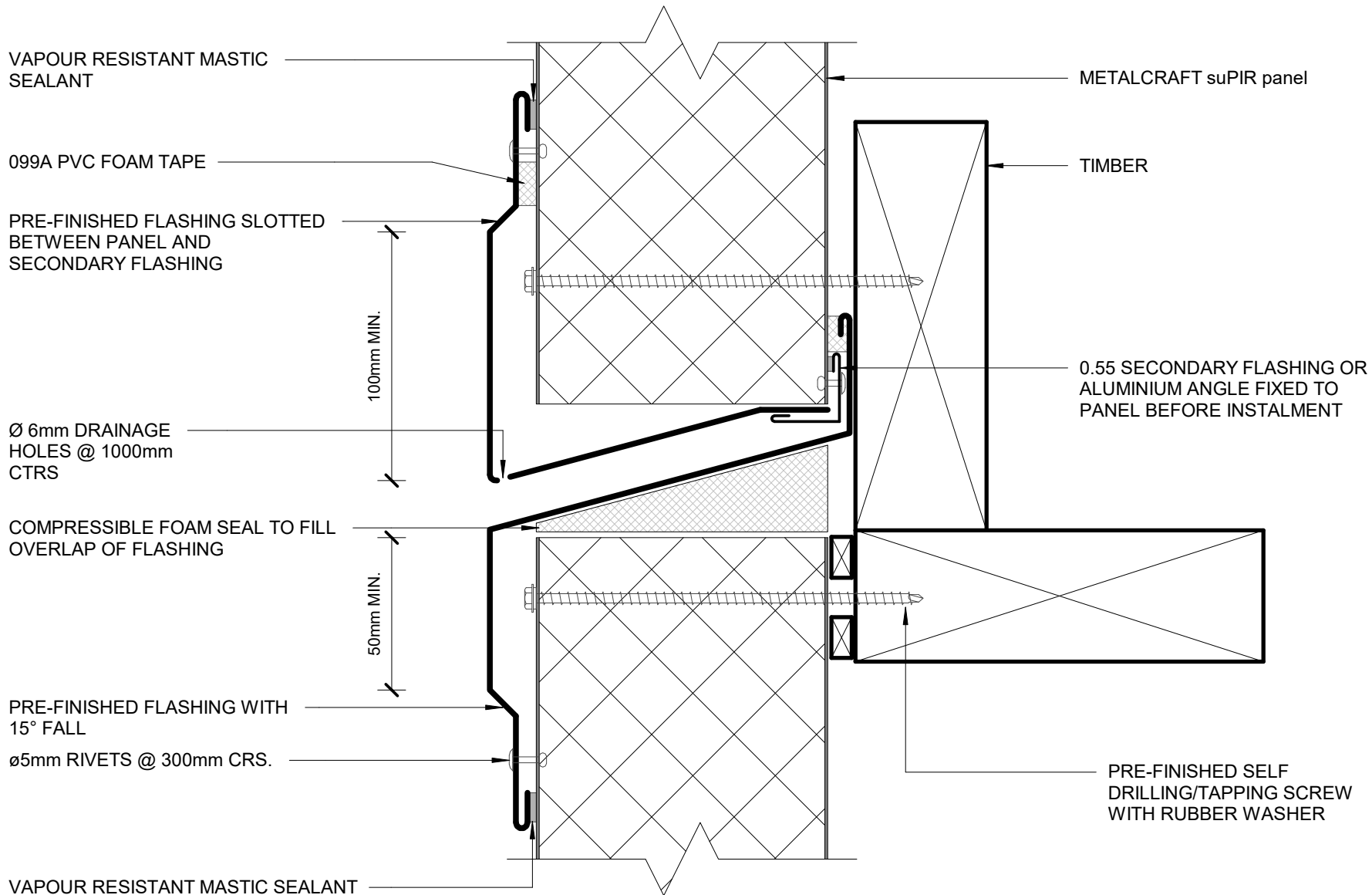
VERTICAL JOINT TYPE C
EXTERNAL WALL DETAILS

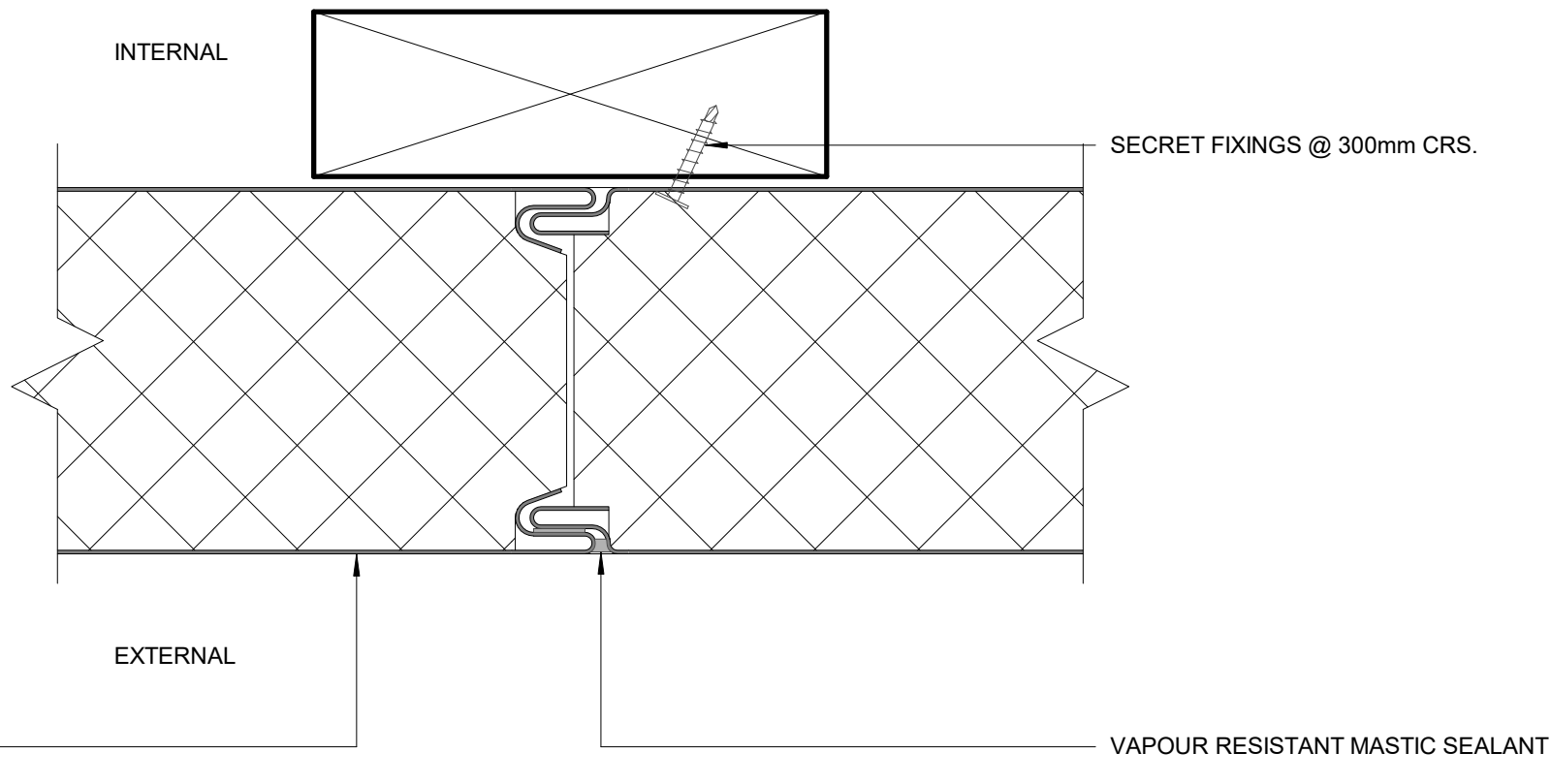




PIPE PENETRATION w PVC FLANGE

EXTERNAL WALL DETAILS





METALCRAFT suPIR panel

VAPOUR RESISTANT MASTIC SEALANT

PRE-FINISHED SELF DRILLING/TAPPING
SCREW WITH RUBBER WASHER

TIMBER

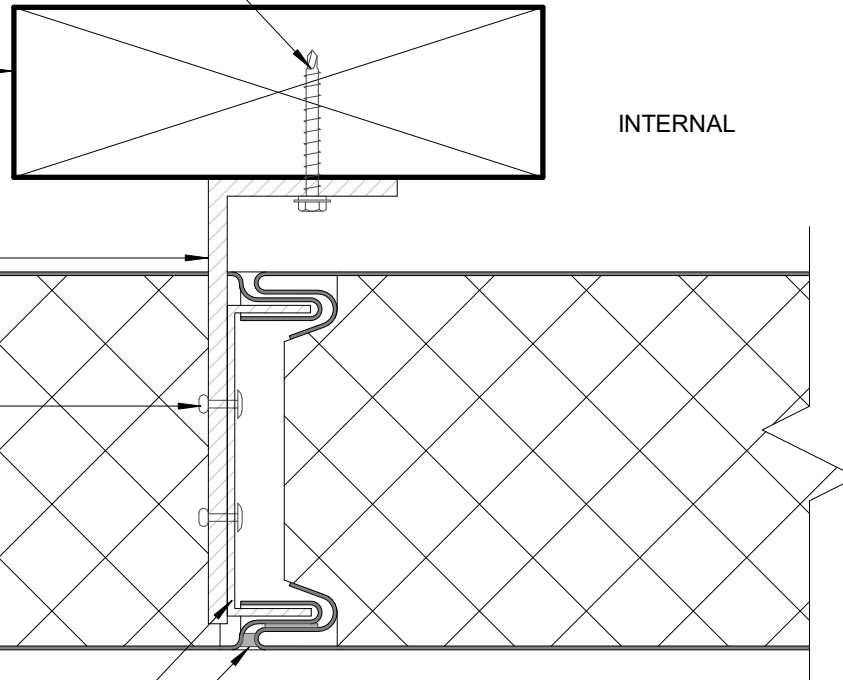
5mm
ALUMINIUM
ANGLE CLEAT

ø5mm RIVETS

METALCRAFT suPIR panel

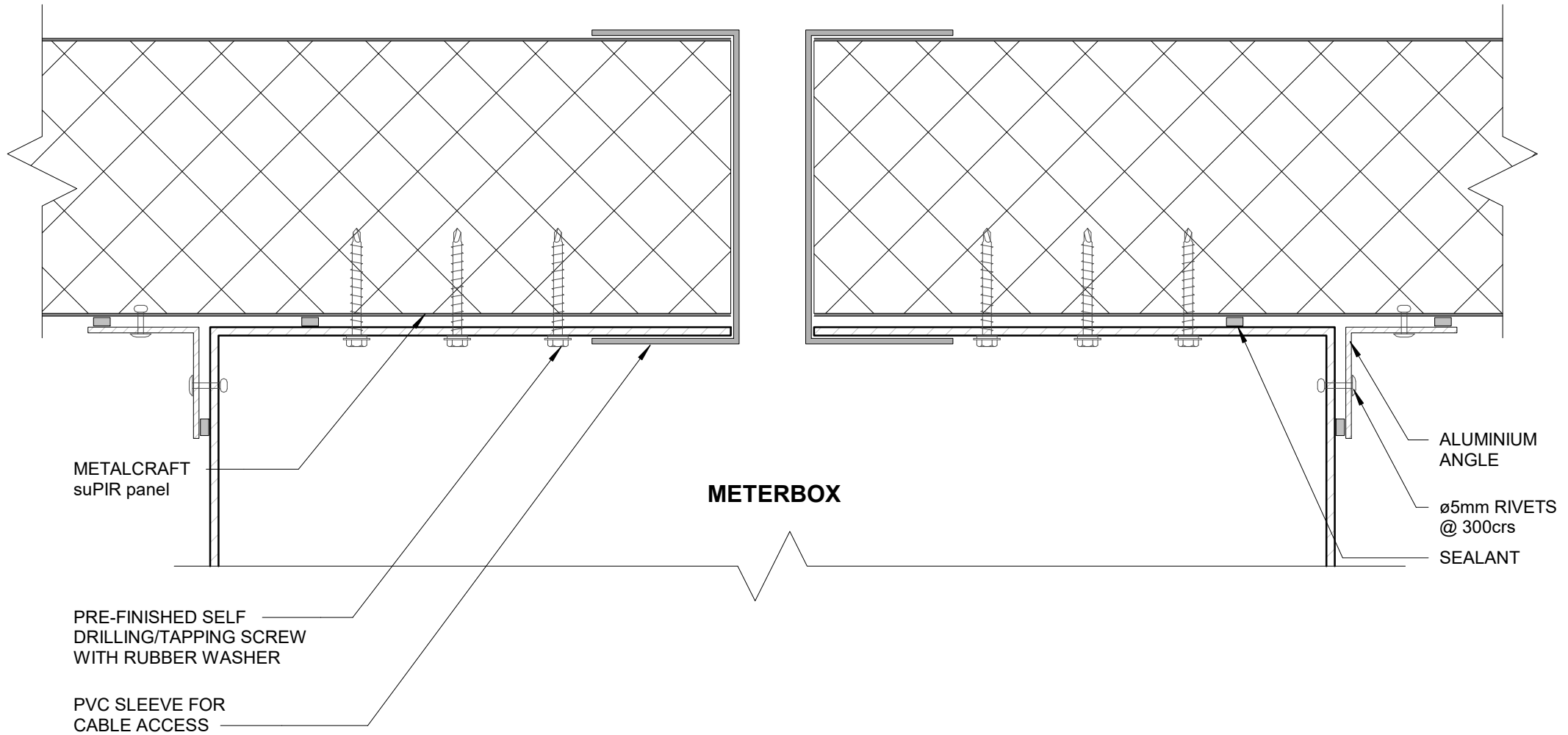
ALUMINIUM BASE
CAP 300mm LONG
MIN

VAPOUR RESISTANT
MASTIC SEALANT



INTERNAL

EXTERNAL

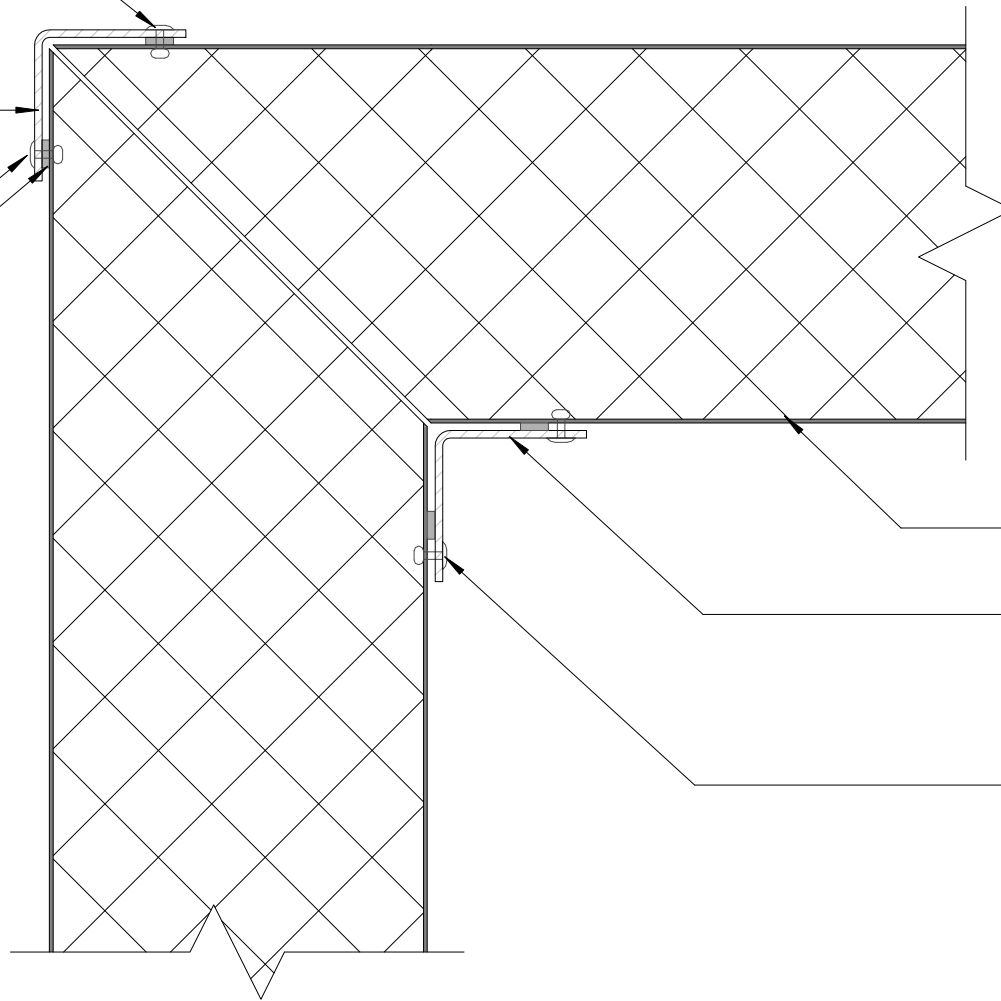


Ø5mm RIVETS @ 300mm CRS

40mm x 40mm 0.55mm MIN.
FOLDED ALUMINIUM
EXTERNAL ANGLE

Ø5mm RIVETS @ 300mm CRS.
WITH SEALANT

SEALANT



METALCRAFT suPIR panel

40mm x 40mm 0.55mm MIN.
FOLDED ALUMINIUM
INTERNAL ANGLE

Ø5mm RIVETS @ 300mm CRS.

NOTE:
ALUMINIUM ANGLES CAN BE
REPLACED WITH STEEL



DISCLAIMER:
All details are to be used for indicative purposes only and the designer should consult both the MRM code of practice version 3.0 / 2017, E2 and all other relevant building codes
Details of the supporting mechanisms are indicative only. Compliance of the supporting mechanisms is the responsibility of the designer. Construction detail can vary for wall cladding. The underlay is detailed as a single line for simplicity and is indicative only. Building paper type and method of installation should comply with underlay manufacturers recommendations and NZBC regulations.

INTERNAL/EXTERNAL CORNER DETAIL

suPIR panel

Rev. 1.0

EXTERNAL WALL DETAILS

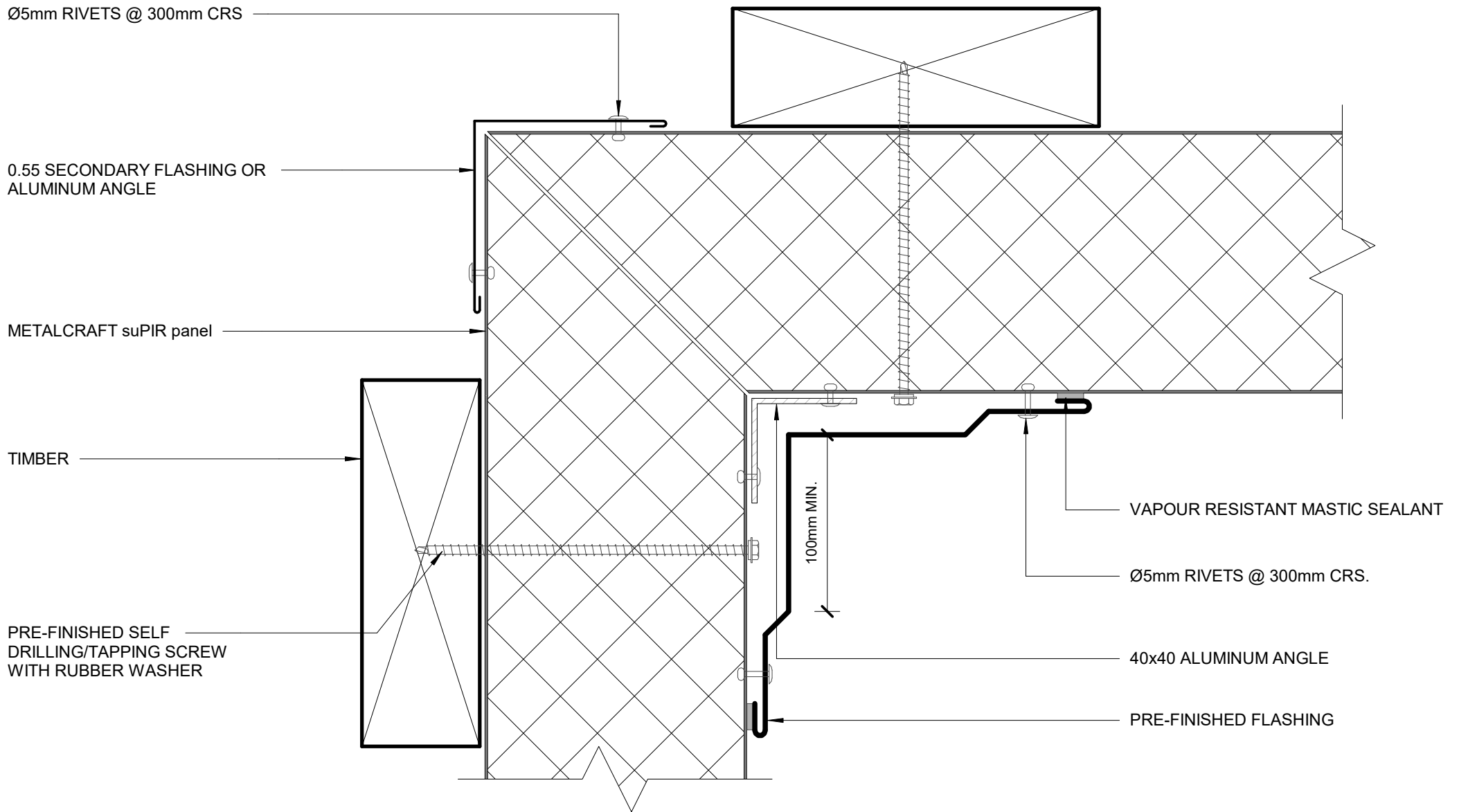
Reference SUPWD

Date 12.2019

Scale 1 : 2

Sheet

11 / 21



Ø5mm RIVETS @ 300mm CRS

0.55 SECONDARY FLASHING OR ALUMINUM ANGLE

METALCRAFT suPIR panel

TIMBER

PRE-FINISHED SELF DRILLING/TAPPING SCREW WITH RUBBER WASHER

VAPOUR RESISTANT MASTIC SEALANT

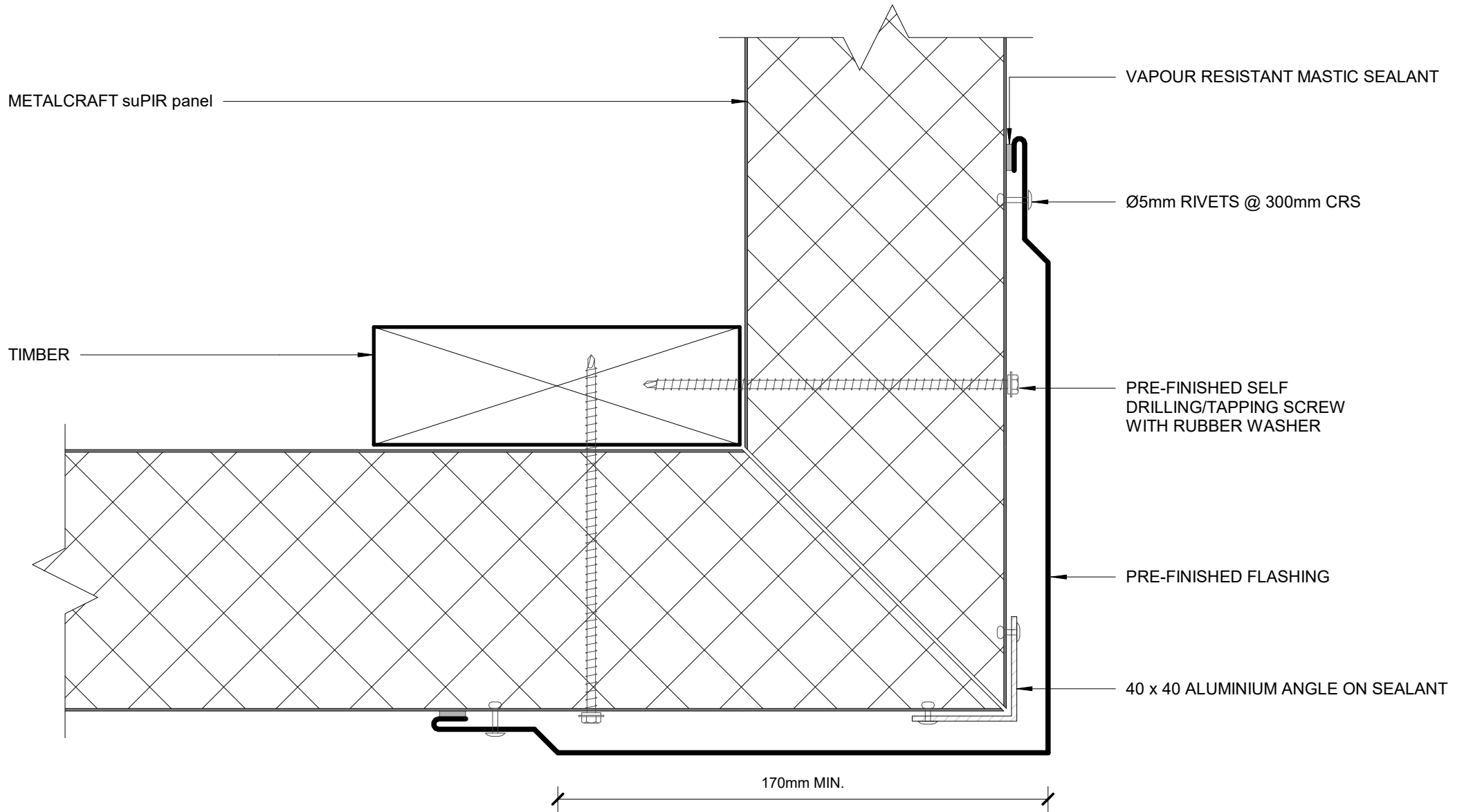
Ø5mm RIVETS @ 300mm CRS.

40x40 ALUMINUM ANGLE

PRE-FINISHED FLASHING

100mm MIN.

ALTERNATIVE INTERNAL CORNER
EXTERNAL WALL DETAILS



METALCRAFT suPIR panel

TIMBER

VAPOUR RESISTANT MASTIC SEALANT

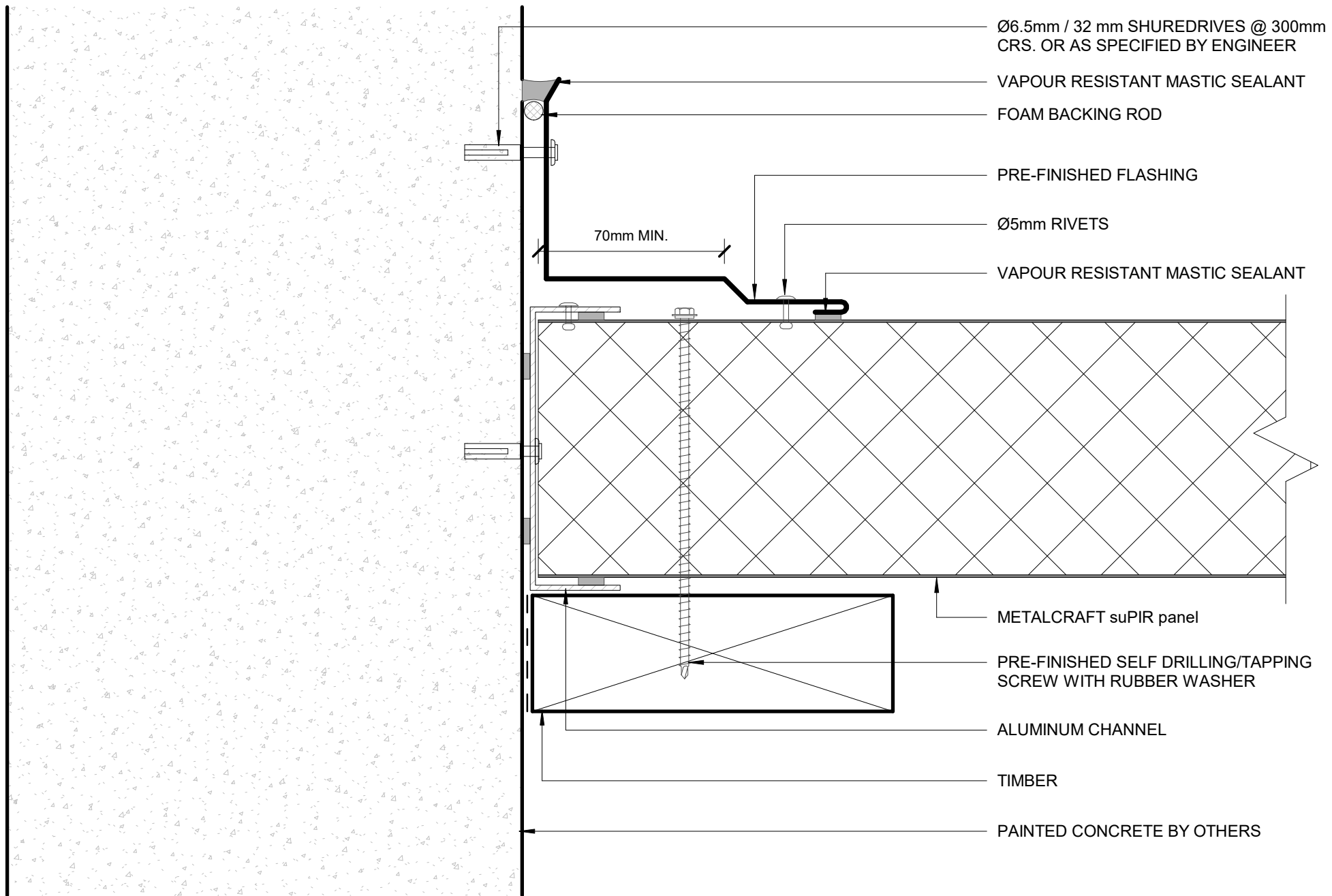
Ø5mm RIVETS @ 300mm CRS

PRE-FINISHED SELF DRILLING/TAPPING SCREW WITH RUBBER WASHER

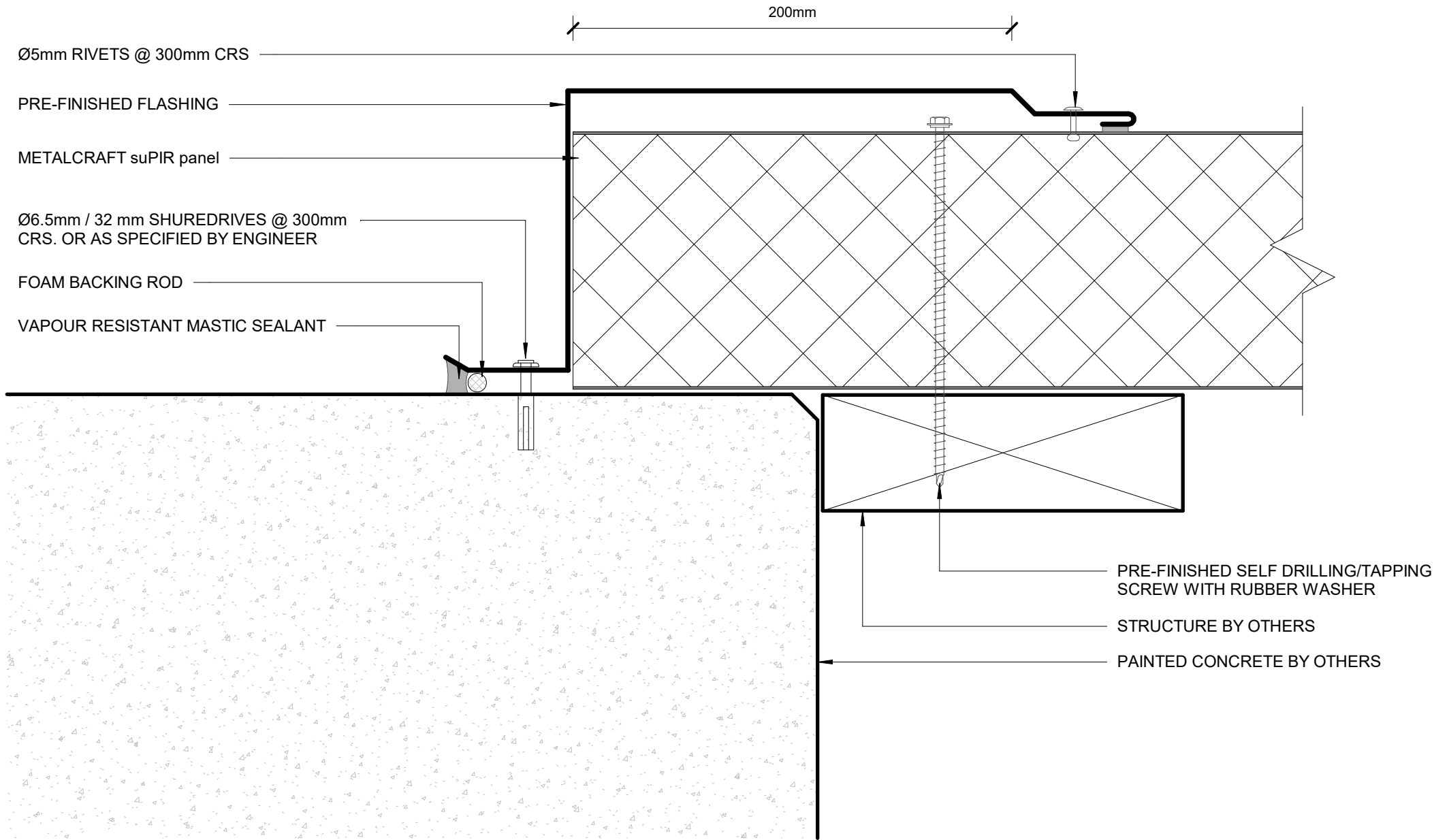
PRE-FINISHED FLASHING

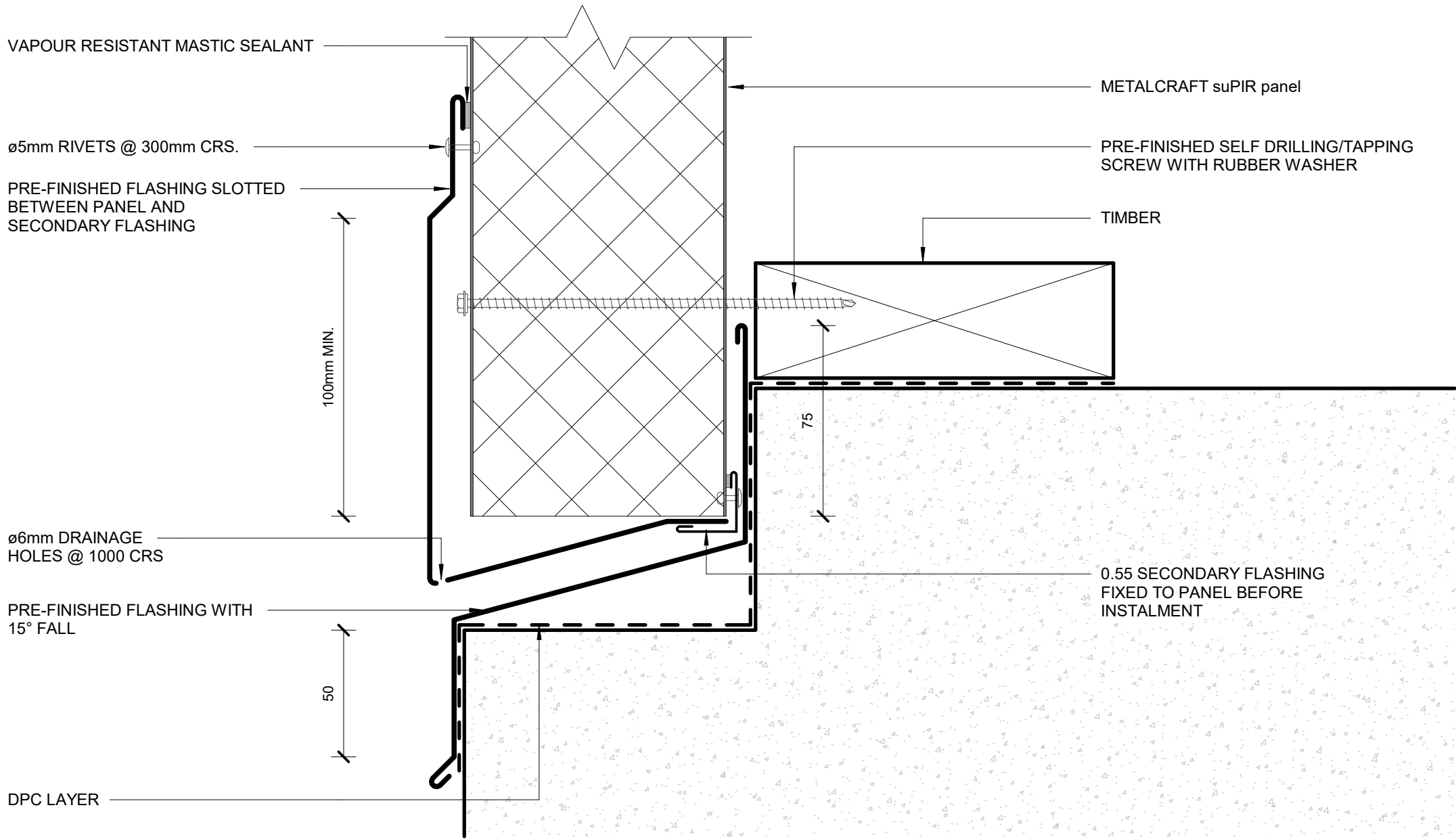
40 x 40 ALUMINIUM ANGLE ON SEALANT

170mm MIN.

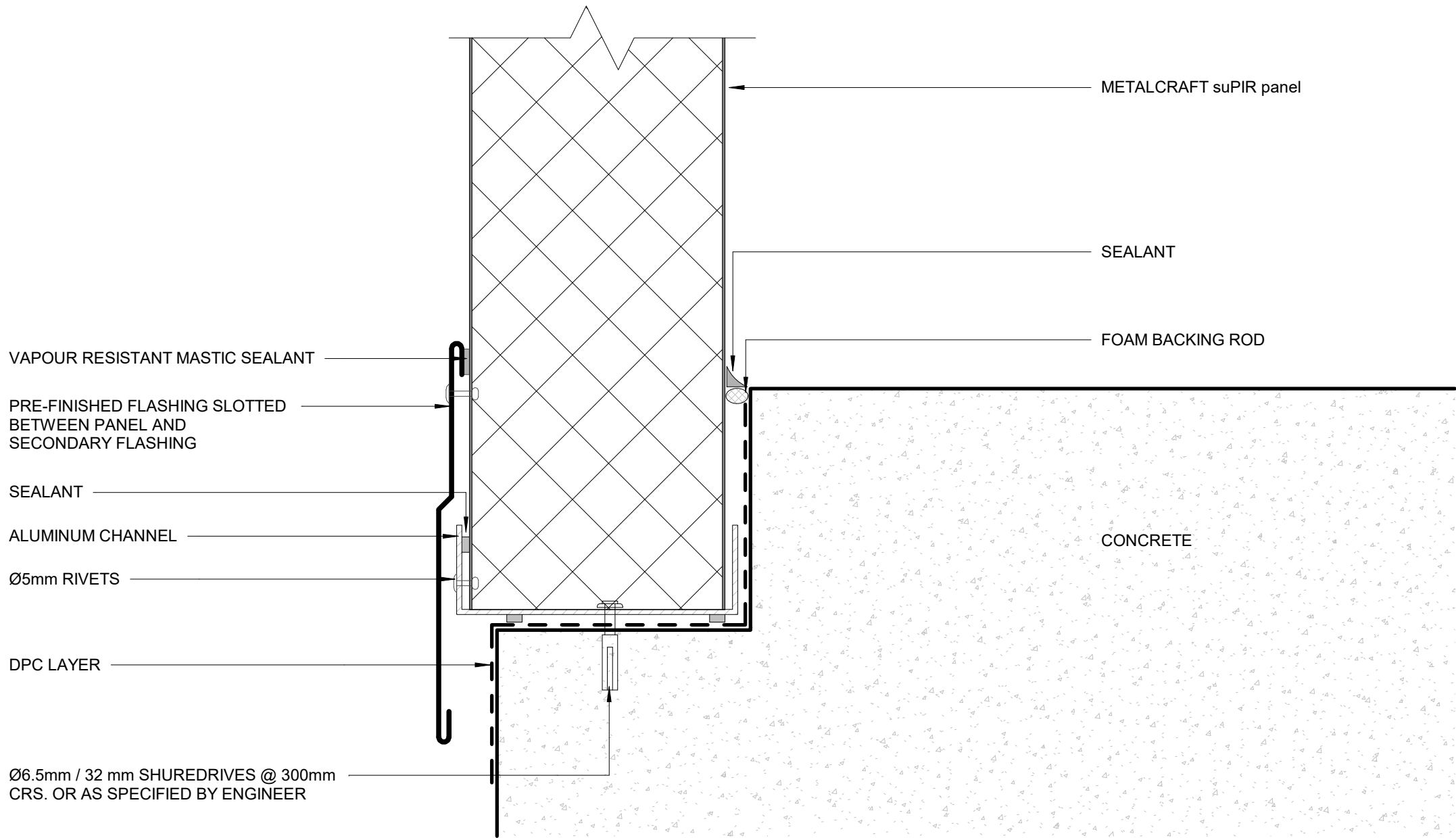


- Ø6.5mm / 32 mm SHUREDRIVES @ 300mm CRS. OR AS SPECIFIED BY ENGINEER
- VAPOUR RESISTANT MASTIC SEALANT
- FOAM BACKING ROD
- PRE-FINISHED FLASHING
- Ø5mm RIVETS
- VAPOUR RESISTANT MASTIC SEALANT
- 70mm MIN.
- METALCRAFT suPIR panel
- PRE-FINISHED SELF DRILLING/TAPPING SCREW WITH RUBBER WASHER
- ALUMINUM CHANNEL
- TIMBER
- PAINTED CONCRETE BY OTHERS

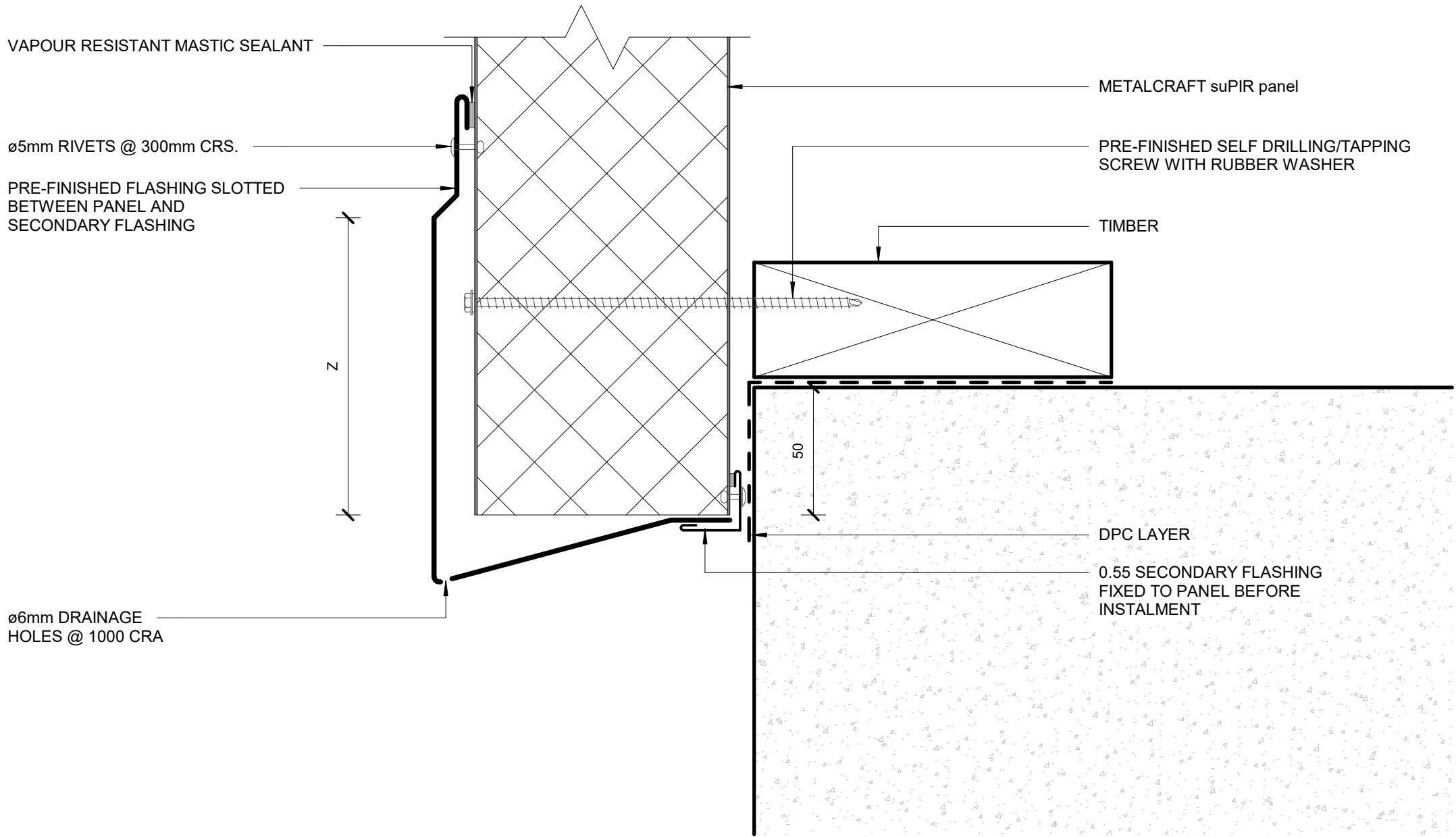




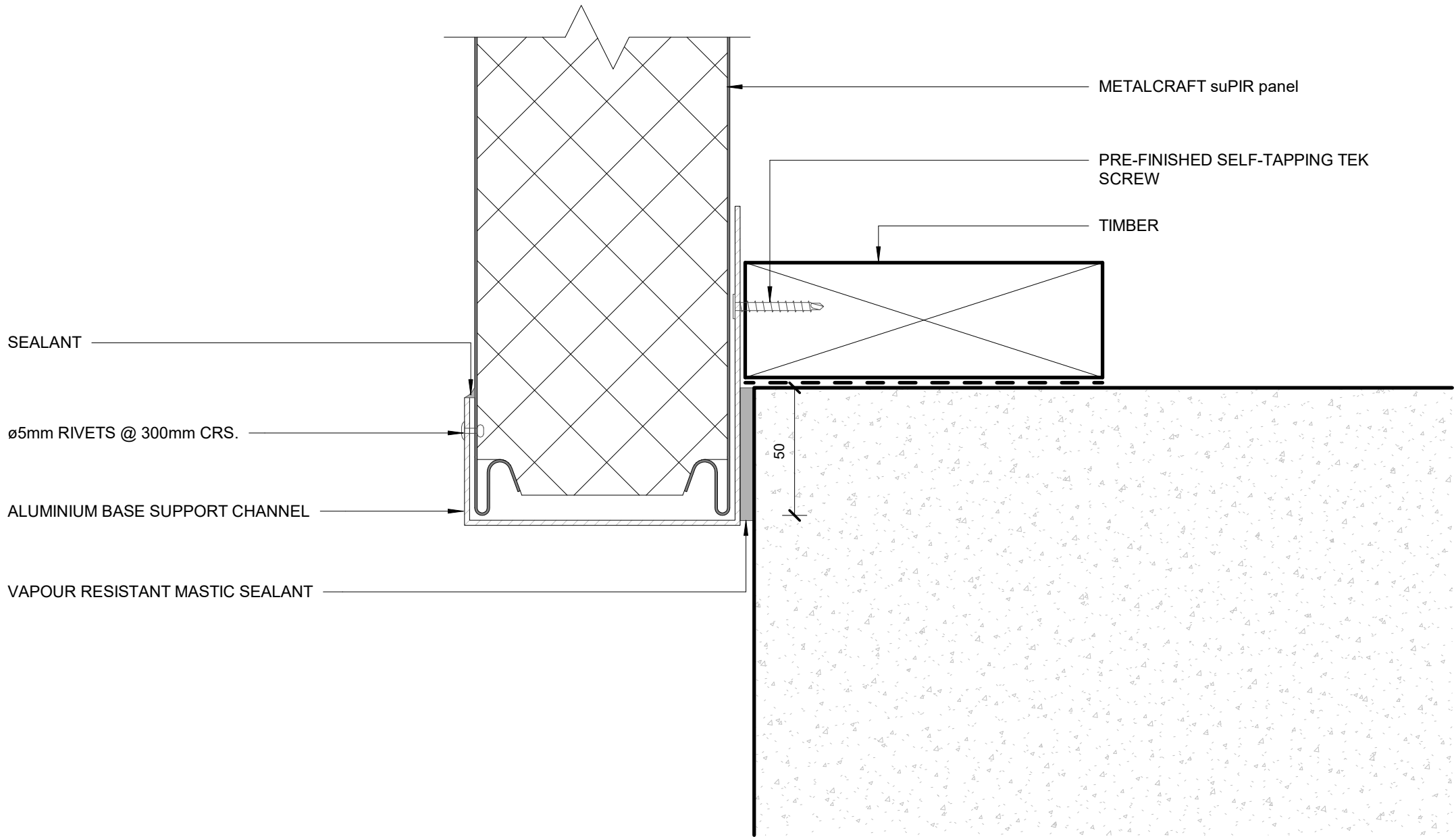
BOTTOM OF CLADDING 01
EXTERNAL WALL DETAILS



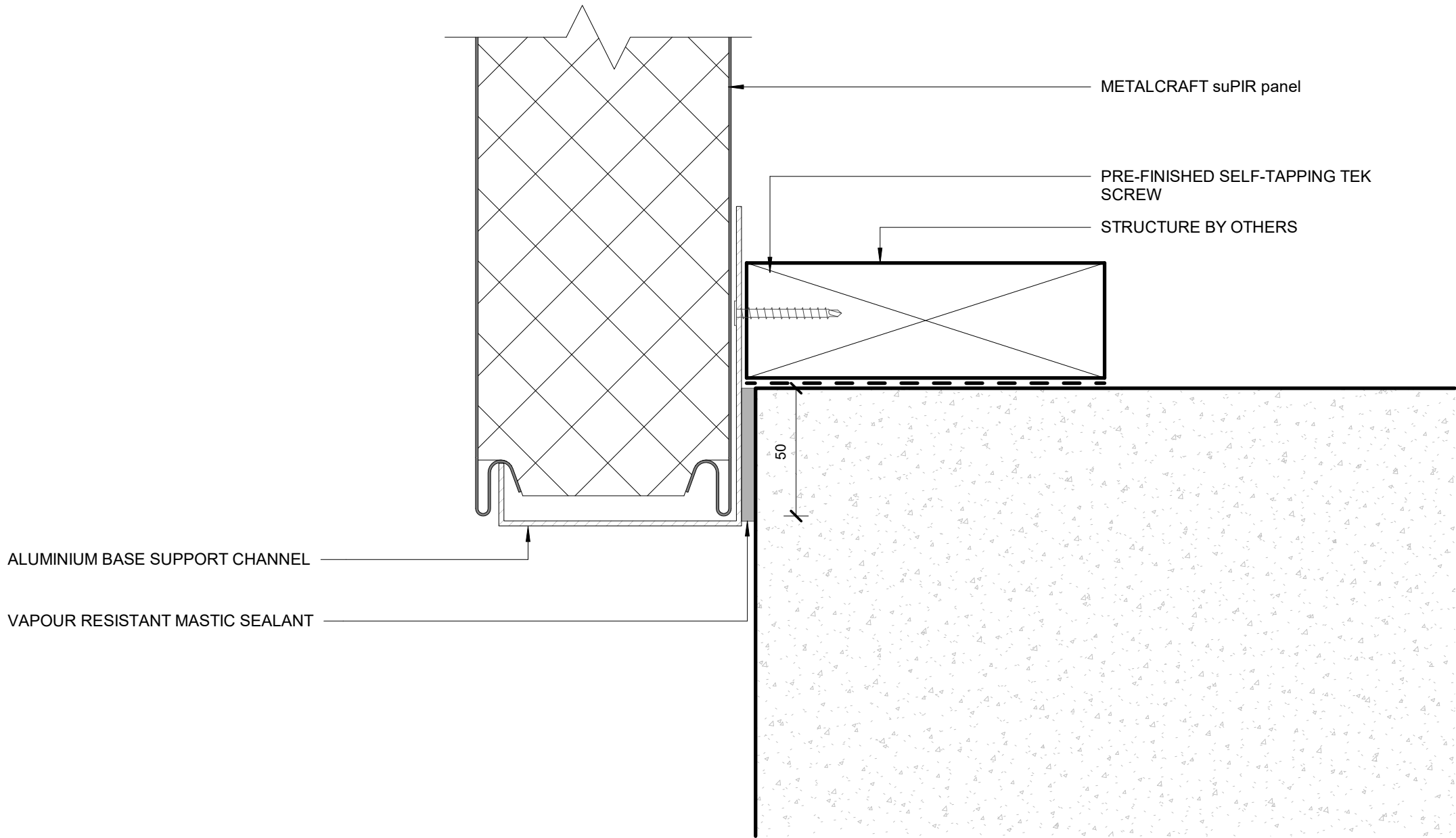
BOTTOM OF CLADDING 02
EXTERNAL WALL DETAILS



BOTTOM OF CLADDING 03
EXTERNAL WALL DETAILS

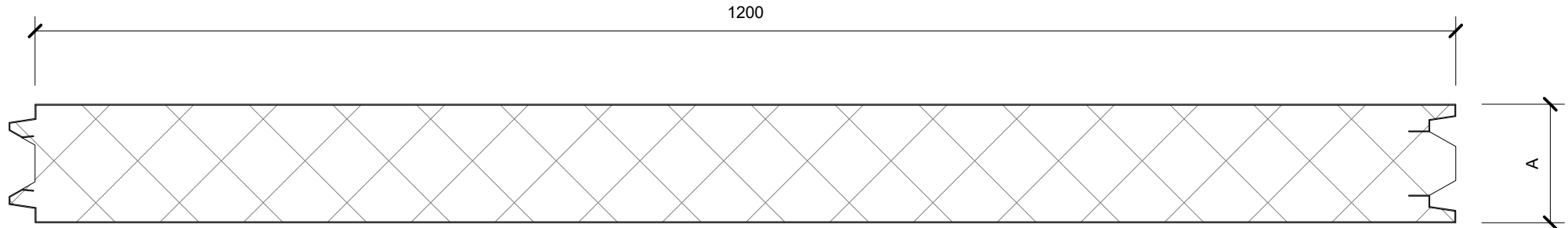


BOTTOM OF CLADDING 04
EXTERNAL WALL DETAILS



BOTTOM OF CLADDING 05
EXTERNAL WALL DETAILS

suPIR panel



FLAT FINISH - AVAILABLE BOTH SIDES

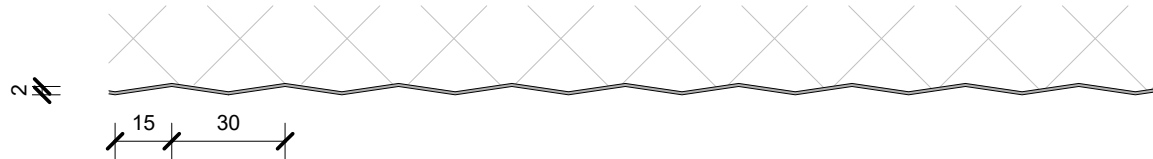
SCALE @ 1:5

A= 50, 75, 100, 125,
150, 200, 250mm

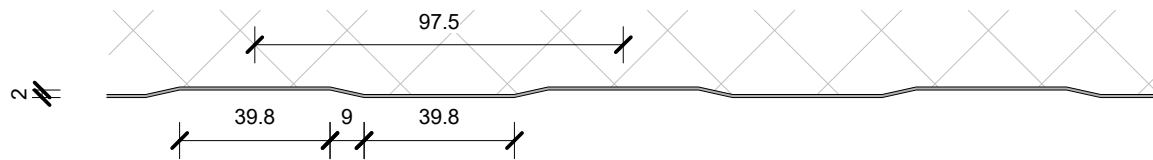
INTERNAL LINER FINISHES

SCALE @ 1:2

SILKLINE FINISH
- ONE SIDE ONLY



MESA FINISH
- ONE SIDE ONLY



RIBBED FINISH
- AVAILABLE BOTH SIDES

