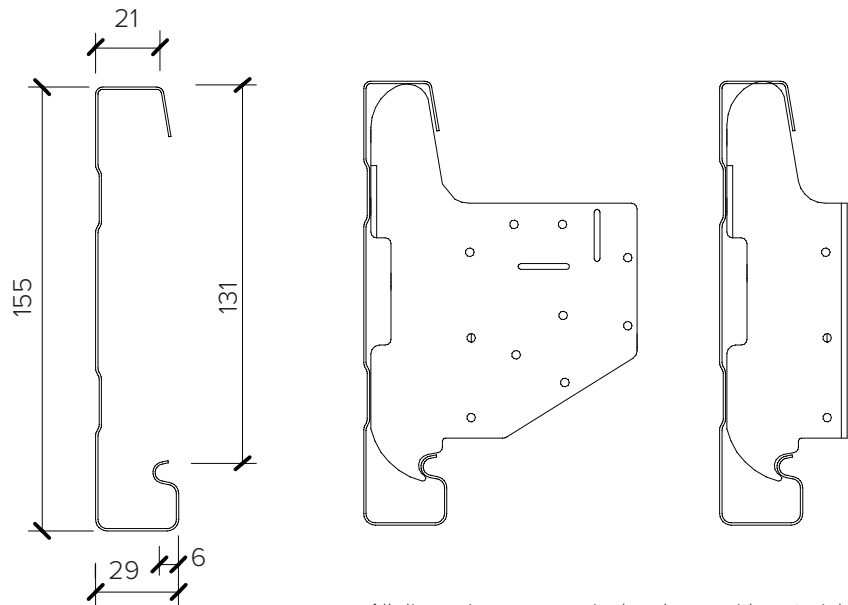
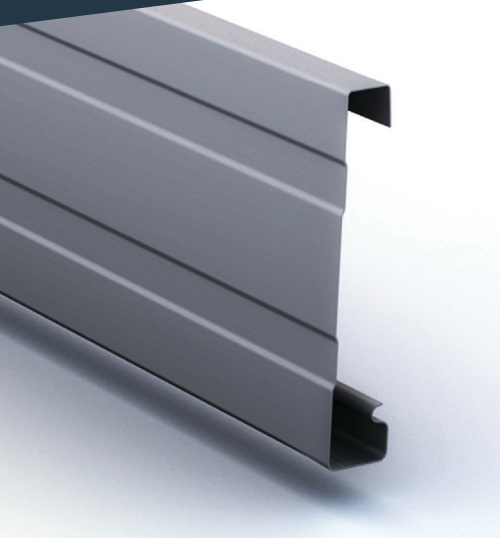


FASCIA 155



All dimensions are nominal and vary with material.

FASCIA 155

Fascia 155 is used on both eave line and gables in conjunction with both the Quadline Gutter and Colonial Quad Gutter to provide a quality Fascia and Gutter Solution.

BRACKET SPECIFICATION

Aviation grade nylon with a glass additive.

800mm maximum spacings. For areas where snow is a consideration maximum spacing must not exceed 600mm centres.

Brackets for external gutters should be located close to all stop-ends, at both ends of sumps and rain-heads at a maximum of 750 mm spacing for gutters less than 180 mm wide, and at 600 mm for gutters 180 – 300 mm wide.

Brackets must be installed to provide a 1:500 (2 mm per metre) minimum gutter gradient towards the outlets.

Outrigger spacings must not exceed the recommended bracket spacing and the recommendations as per NZS 3604:2011.

If other spacings are required refer Metalcraft Roofing.

FASCIA SPECIFICATION

Material: 0.55BMT G300 COLORSTEEL® Maxx®.
Metallic coating is AZ 200 consistent with AS 1397:2011.

COLORSTEEL® Maxx® is Product Type 6 consistent with AS/NZS 2728:2013.

IMPORTANT:

Loose fill insulation must not be allowed to have contact with Fascia 155.

FIXINGS

TIMBER: 8G x 25mm Surefix screw.

STEEL: 8G Steeltite.

- Fascia brackets must be fitted to all rafters.
- Fascia bracket fixed with 3x Class 4 or 5 screws depending on Environmental Category.

COMPLIANCE

For scope of use, limitations and compliance with the New Zealand Building Code. Refer to the PTS: PASS 19066 available to download:

metalcraftgroup.co.nz.

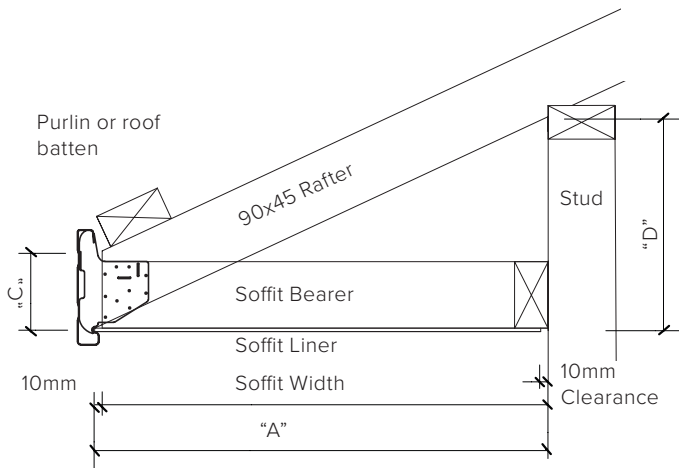
INSTALLATION

Installation of Fascia 155 by specialised installers only.



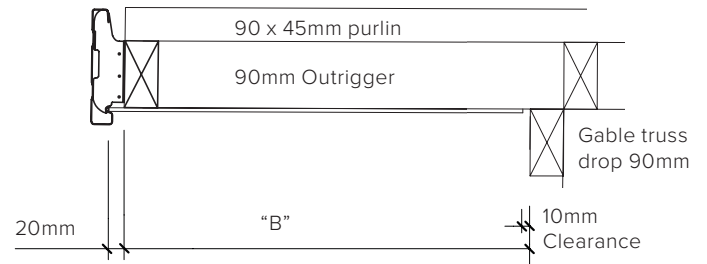
FASCIA 155

EAVES DETAIL - HIP AND GABLE ROOF



FASCIA 155

GABLE END



| EAVES DETAIL FOR HIP AND GABLE ROOF | | | | | |
|-------------------------------------|-----|-----|-----|-----|-----|
| SOFFIT WIDTH (mm) | 300 | 450 | 600 | 750 | 900 |
| DIM "A" | 310 | 450 | 610 | 760 | 910 |

| GABLE END DETAIL | | | | | |
|-------------------|-----|-----|-----|-----|-----|
| SOFFIT WIDTH (mm) | 300 | 450 | 600 | 750 | 900 |
| DIM "B" | 290 | 440 | 590 | 740 | 890 |

- 10mm soffit clearance allowed for
- 50 x 40mm batten for metal tile.
- Set out done on a 45mm purlin.
- Soffit groove allows for sloping soffit upto a maximum of 35 degrees
- Kick outs may be required.
- Soffit bearers fixed to right hand side of rafter, looking at building.
- Install bottom purlin or batten after fascia is fitted. This is important to avoid bird-proofing problems.
- Finished timber sizes stated.
- Soffit bearers required on all hip corners.

- 10mm soffit clearance has been allowed for.
- Gable flashing required in longrun roofs.
- Gable truss drops 90mm for 90mm outrigger.
- 90 x 45mm outrigger
- 90mm fly rafter
- Finished timber sizes
- All measurements must be checked on site prior to installation.

GENERAL NOTES:

- Please inform your precutter which Metalcraft external fascia system you have selected.
- Prior to installation, scaffolding must be supplied by the customer to:
 - extend at least 500mm past external/gable corners
 - be approximately 1700mm below the rafter end in height meet OSH-approved safety standards
- Metalcraft external rainwater products must be washed regularly to ensure maximum longevity. Areas that do not get regular washing by rain may require special attention.

FASCIA 155

GABLE END DROP HEIGHT FOR METAL LONGRUN ROOFING & METAL TILES

For minimum pitch of longrun roofing and or metal tiles refer to relevant product information available on: metalcraftgroup.co.nz

| PITCH (degrees) | FRAMING DROP HEIGHT "D" | | | | | |
|--------------------|------------------------------|--------------|-----------|-----------|-----------|-----------|
| | FASCIA DROP HEIGHT "C" | SOFFIT WIDTH | | | | |
| | | 300 mm | 450 mm | 600 mm | 750 mm | 900 mm |
| 10 | 93 | 55 | 81 | 108 | 134 | 160 |
| 11 | 94 | 60 | 89 | 119 | 148 | 177 |
| 12 | 94 | 66 | 98 | 130 | 162 | 193 |
| 13 | 95 | 72 | 106 | 141 | 175 | 210 |
| 14 | 95 | 77 | 115 | 152 | 189 | 227 |
| 15 | 96 | 83 | 123 | 163 | 204 | 244 |
| 16 | 96 | 89 | 132 | 175 | 218 | 261 |
| 17 | 97 | 95 | 141 | 186 | 232 | 278 |
| 18 | 98 | 101 | 149 | 198 | 247 | 296 |
| 19 | 99 | 107 | 158 | 210 | 262 | 313 |
| 20 | 99 | 113 | 167 | 222 | 277 | 331 |
| 21 | 100 | 119 | 177 | 234 | 292 | 349 |
| 22 | 101 | 125 | 186 | 246 | 307 | 368 |
| 23 | 102 | 132 | 195 | 259 | 323 | 386 |
| 24 | 103 | 138 | 205 | 272 | 338 | 405 |
| 25 | 104 | 145 | 215 | 284 | 354 | 424 |
| 26 | 105 | 151 | 224 | 298 | 371 | 444 |
| 27 | 106 | 158 | 234 | 311 | 387 | 464 |
| 28 | 107 | 165 | 245 | 324 | 404 | 484 |
| 29 | 108 | 172 | 255 | 338 | 421 | 504 |
| 30 | 110 | 179 | 266 | 352 | 439 | 525 |

FASCIA 155

HIP ROOF DROP HEIGHT FOR METAL LONGRUN ROOFING & METAL TILES

All hip roofs to have a toe cut of 105mm.