

ESPAN SOLAR CLAMP

The custom design Espan® Solar Clamp was developed specifically to mount PV solar modules to Espan 340 or 470. Can also be used for other applications such as arials or any other roof accessories.

Each standing seam clamp includes

- 1 Clamp (1pcs)
- 2 Grub screws: M10 x 20mm (4pcs)
- 3 Hex flange screw: M8 x 20mm (1pcs)

Material finish

- 1 Clamp: extruded aluminium alloys: 6005-T5, clear anodized average 12µm.
- 2 Grub screw: Stainless steel 304, A2 70.
- 3 Hex flange screw: Stainless steel 304. A2 70.

Performance data

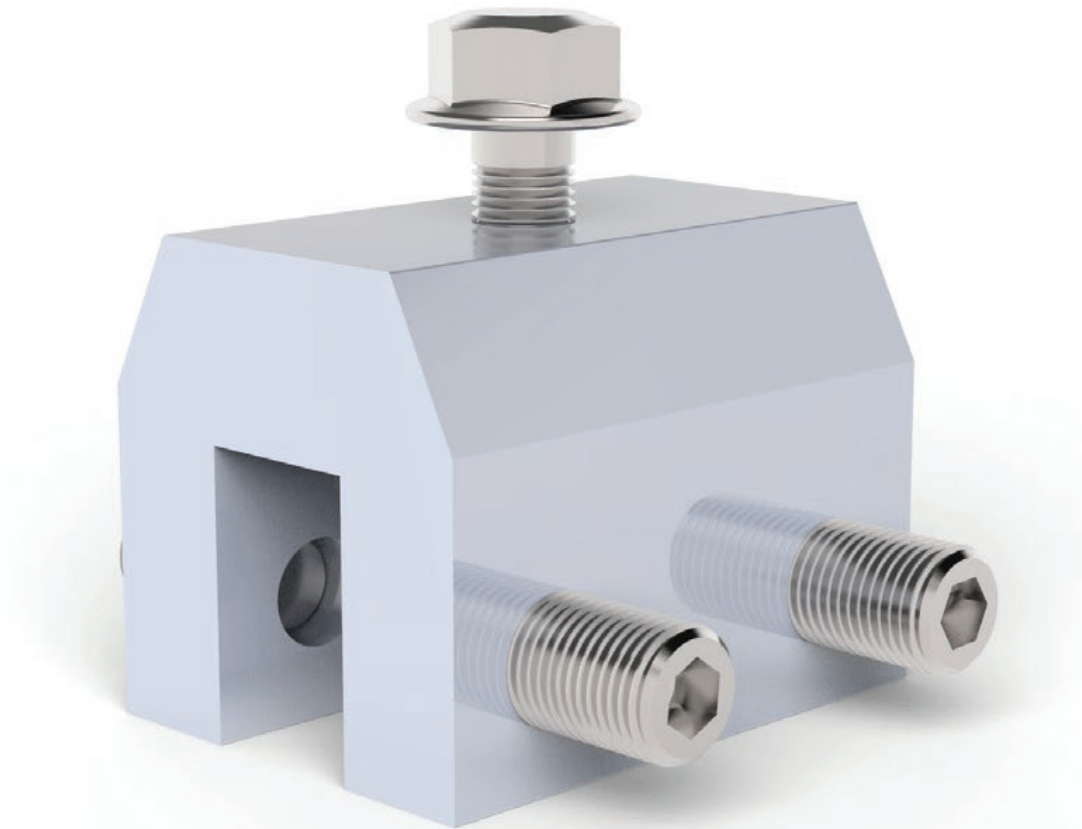
Depreciated load each clamp sustained in testing was 1.7kN
For a standard Aluminium frame Solar module of 1.637m² (1650x992mm), the equivalent depreciated uplift pressure is 4.1kPa
This exceeds the Wind Zone Ultimate Limit State' for Extra High (EH)
Wind zone Of 55m/s or 1.82kPa referred to in Roofing CoP Section '3.0.2 NZS 3604:2011'. Grub screws should be tightened to 4Nm.

Material warranty

Manufacturer provides a 10-year limited warranty for the materials and manufacture defects.

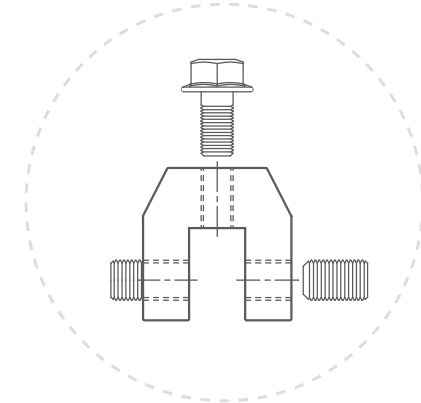
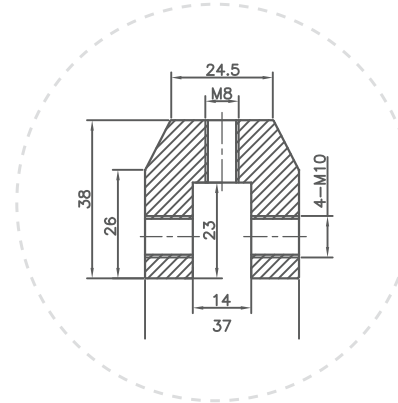
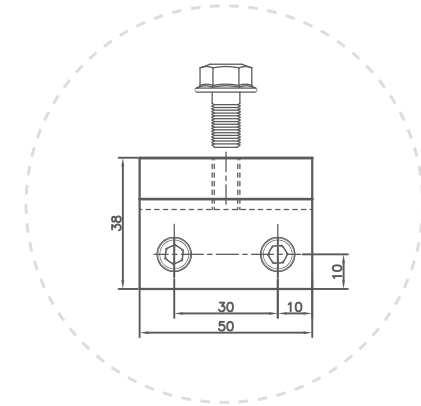
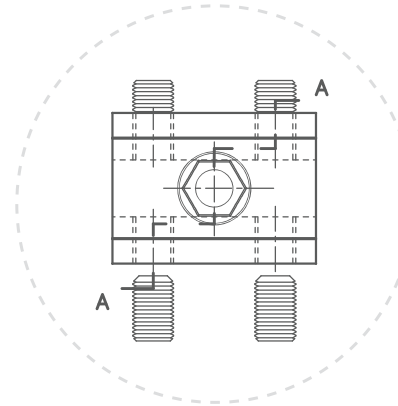
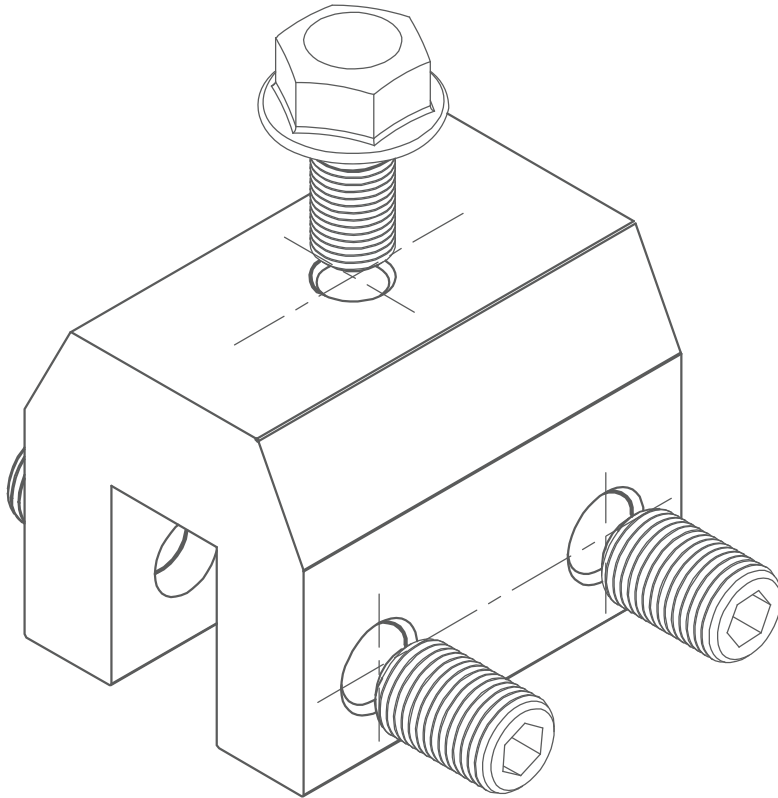
Works with the espan roof profile

FLAT PAN



10YEARS
WARRANTY

SPECIFICATION

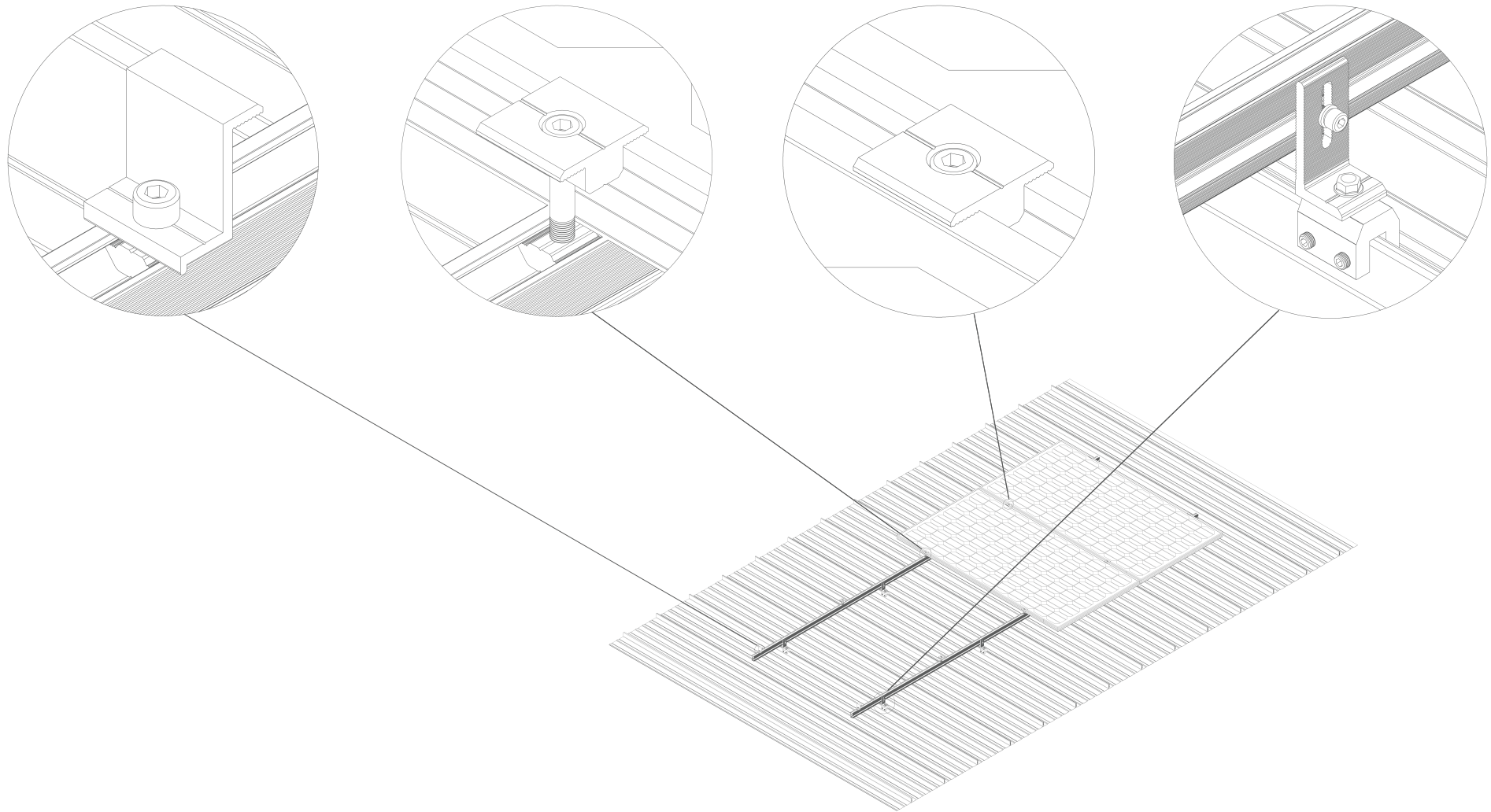


10YEARS
WARRANTY

APPLICATION



TECHNICAL DRAWING



APPLICATION



